

# Anti-Swine IgG (H&L) Secondary Antibody

Rabbit Polyclonal, Unconjugated

Catalog # ASR1371

## Product Information

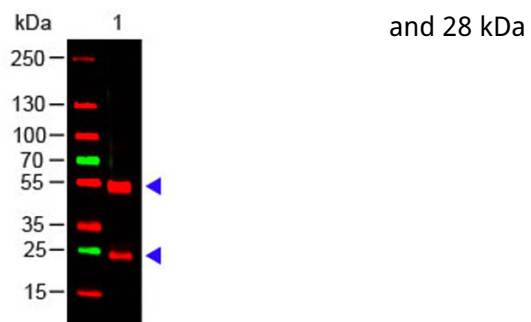
<b>Description</b>	Anti-SWINE IgG (H&L) (RABBIT) Antibody
<b>Host</b>	Rabbit
<b>Conjugate</b>	Unconjugated
<b>Target Species</b>	Swine
<b>Clonality</b>	Polyclonal
<b>Application</b>	WB
<b>Physical State</b>	Lyophilized
<b>Host Isotype</b>	Antiserum
<b>Target Isotype</b>	IgG (H&L)
<b>Buffer</b>	0.01 M Sodium Phosphate, 0.15 M Sodium Chloride, pH 7.2
<b>Immunogen</b>	Swine IgG whole molecule
<b>Reconstitution Volume</b>	2.0 mL
<b>Reconstitution Buffer</b>	Restore with deionized water (or equivalent)
<b>Stabilizer</b>	None
<b>Preservative</b>	0.01% (w/v) Sodium Azide

## Additional Information

<b>Shipping Condition</b>	Ambient
<b>Purity</b>	This product was prepared from monospecific antiserum by a delipidation and defibrination. Assay by immunoelectrophoresis resulted in a single precipitin arc against Swine IgG and Swine Serum.
<b>Storage Condition</b>	Store vial at 4° C prior to restoration. For extended storage aliquot contents and freeze at -20° C or below. Avoid cycles of freezing and thawing. Centrifuge product if not completely clear after standing at room temperature. This product is stable for several weeks at 4° C as an undiluted liquid. Dilute only prior to immediate use.
<b>Precautions Note</b>	This product is for research use only and is not intended for therapeutic or diagnostic applications.

## Images

Western Blot of Rabbit anti-Swine IgG (H&L) Antibody  
Lane 1: Swine IgG Load: 100 ng per lane Primary antibody: Swine IgG (H&L) Antibody at 1:1000 for overnight at 4°C Secondary antibody: DyLight™ 649 goat anti-rabbit at 1:20,000 for 30 min at RT Block: MB-070 for 30 min at RT Predicted/Observed size: 55 and 28 kDa, 55



Please note: All products are 'FOR RESEARCH USE ONLY. NOT FOR USE IN DIAGNOSTIC OR THERAPEUTIC PROCEDURES'.