

# Goat IgG F(ab')<sub>2</sub> Biotin

Catalog # ASR1463

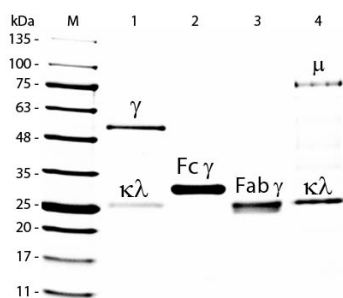
## Product Information

<b>Description</b>	GOAT IgG F(ab') <sub>2</sub> fragment Biotin conjugated
<b>Conjugate</b>	Biotin
<b>Physical State</b>	Lyophilized
<b>Host Isotype</b>	IgG F(ab') <sub>2</sub>
<b>Buffer</b>	0.02 M Potassium Phosphate, 0.15 M Sodium Chloride, pH 7.2
<b>Species of Origin</b>	Goat
<b>Reconstitution Volume</b>	1.0 mL
<b>Reconstitution Buffer</b>	Restore with deionized water (or equivalent)
<b>Stabilizer</b>	10 mg/mL Bovine Serum Albumin (BSA) - Immunoglobulin and Protease free
<b>Preservative</b>	0.01% (w/v) Sodium Azide

## Additional Information

<b>Shipping Condition</b>	Ambient
<b>Purity</b>	This product was prepared from normal serum delipidation, salt fractionation, ion exchange chromatography followed by pepsin digestion and extensive dialysis against the buffer stated above. Assay by immunoelectrophoresis resulted in a single precipitin arc against anti-biotin, anti-Goat IgG, anti-Goat IgG F(ab') <sub>2</sub> and anti-Goat Serum. No reaction was observed against anti-Goat IgG F(c) or anti-Pepsin.
<b>Storage Condition</b>	Store vial at 4° C prior to restoration. For extended storage aliquot contents and freeze at -20° C or below. Avoid cycles of freezing and thawing. Centrifuge product if not completely clear after standing at room temperature. This product is stable for several weeks at 4° C as an undiluted liquid. Dilute only prior to immediate use.
<b>Precautions Note</b>	This product is for research use only and is not intended for therapeutic or diagnostic applications.

## Images



SDS-PAGE of Goat IgG F(ab')<sub>2</sub> Fragment Biotin Conjugated (p/n ASR1463). Lane M: 5 μL Opal Prestained Marker (p/n MB-210-0500). Lane 1: Reduced Goat IgG Whole Molecule (p/n 005-0102). Lane 2: Reduced Goat IgG F(c) Fragment (p/n 005-0103). Lane 3: Reduced Goat IgG F(ab')<sub>2</sub> Fragment Biotin Conjugated (p/n ASR1463). Lane 4: Reduced Goat IgM Whole Molecule (p/n 005-0107). Load: 1 μg for IgG, F(c) and F(ab')<sub>2</sub>; 3 μg for IgM. Predicted/Observed size: IgG at 50 and 25 kDa; F(c) at 25

kDa; F(ab) at 25 kDa; IgM at 70 and 23 kDa. Observed F(c)  
Fragment migrates slightly higher.

Please note: All products are 'FOR RESEARCH USE ONLY. NOT FOR USE IN DIAGNOSTIC OR THERAPEUTIC PROCEDURES'.