

Anti-Bovine Serum Albumin BSA Secondary Antibody

Rabbit Polyclonal, Unconjugated

Catalog # ASR1522

Product Information

Description	Anti-BOVINE ALBUMIN (RABBIT) Antibody (BSA)
Host	Rabbit
Conjugate	Unconjugated
Target Species	Bovine
Reactivity	Bovine
Clonality	Polyclonal
Application	WB
Physical State	Lyophilized
Host Isotype	Antiserum
Buffer	0.02 M Potassium Phosphate, 0.15 M Sodium Chloride, pH 7.2
Immunogen	Anti-Bovine Serum Albumin antibody was produced by repeated immunizations with Bovine Serum Albumin.
Reconstitution Volume	2.0 mL
Reconstitution Buffer	Restore with deionized water (or equivalent)
Stabilizer	None
Preservative	0.01% (w/v) Sodium Azide

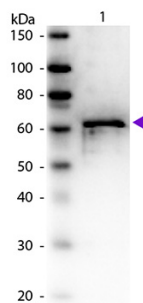
Additional Information

Shipping Condition	Ambient
Application Note	Anti-ALB antibody is suitable for western blotting, IHC and ELISA. The antibody may be suitable for other applications, although no supporting data is available.
Purity	Bovine Serum Albumin antibody is supplied in the form of monospecific antiserum prepared by a delipidation and defibrination. Assay by immunoelectrophoresis resulted in a single precipitin arc against purified and partially purified Albumin [Bovine Serum]. Cross reactivity against Albumin from other tissues and species may occur but have not been specifically determined.
Storage Condition	Store vial at 4° C prior to restoration. For extended storage aliquot contents and freeze at -20° C or below. Avoid cycles of freezing and thawing. Centrifuge product if not completely clear after standing at room temperature. This product is stable for several weeks at 4° C as an undiluted liquid. Dilute only prior to immediate use.
Precautions Note	This product is for research use only and is not intended for therapeutic or diagnostic applications.

Background

Anti-Bovine Serum Albumin antibody detects BSA. Serum albumin is the main protein of plasma. It has a good binding capacity for water, Ca²⁺, Na⁺, K⁺, fatty acids, hormones, bilirubin and drugs. Its main function is the regulation of the colloidal osmotic pressure of blood. ALB is the major zinc transporter in plasma; it typically binds about 80% of all plasma zinc. BSA antibody is ideal for investigators involved in Cell Signaling, Neuroscience and Signal Transduction research.

Images



Western Blot of Rabbit anti-Bovine Serum Albumin antibody. Lane 1: BSA. Lane 2: None. Load: 50 ng per lane. Primary antibody: BSA antibody at 1:1,000 for overnight at 4°C. Secondary antibody: Peroxidase rabbit secondary antibody at 1:40,000 for 30 min at RT. Block: 5% BLOTTO-TBS for 30 min at RT. Predicted/Observed size: 66 kDa, 66 kDa for BSA. Other band(s): None.

Please note: All products are 'FOR RESEARCH USE ONLY. NOT FOR USE IN DIAGNOSTIC OR THERAPEUTIC PROCEDURES'.