

# Anti-Rabbit IgG (H&L) Pre-Adsorbed Secondary Antibody

Rat Polyclonal, Unconjugated

Catalog # ASR1638

## Product Information

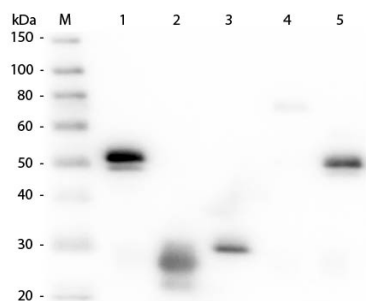
<b>Description</b>	Anti-RABBIT IgG (H&L) (RAT) Antibody (Min X Hu, Gt, Ms Serum Proteins)
<b>Host</b>	Rat
<b>Conjugate</b>	Unconjugated
<b>Target Species</b>	Rabbit
<b>Clonality</b>	Polyclonal
<b>Application</b>	WB
<b>Physical State</b>	Liquid (sterile filtered)
<b>Host Isotype</b>	IgG
<b>Target Isotype</b>	IgG (H&L)
<b>Buffer</b>	0.02 M Potassium Phosphate, 0.15 M Sodium Chloride, pH 7.2
<b>Immunogen</b>	Rabbit IgG whole molecule
<b>Stabilizer</b>	None
<b>Preservative</b>	0.01% (w/v) Sodium Azide

## Additional Information

<b>Shipping Condition</b>	Wet Ice
<b>Purity</b>	This product was prepared from monospecific antiserum by immunoaffinity chromatography using Rabbit IgG coupled to agarose beads followed by solid phase adsorption(s) to remove any unwanted reactivities. Assay by immunoelectrophoresis resulted in a single precipitin arc against anti-Rat Serum, Rabbit IgG and Rabbit Serum. No reaction was observed against Goat, Human and Mouse Serum Proteins.
<b>Storage Condition</b>	Store vial at 4° C prior to opening. This product is stable for several weeks at 4° C as an undiluted liquid. Dilute only prior to immediate use. For extended storage aliquot contents and freeze at -20° C or below. Avoid cycles of freezing and thawing.
<b>Precautions Note</b>	This product is for research use only and is not intended for therapeutic or diagnostic applications.

## Images

Western Blot of Anti-Rabbit IgG (H&L) (RAT) Antibody (Min X Hu, Gt, Ms Serum Proteins) (p/n ASR1638). Lane M: 3 µl Molecular Ladder. Lane 1: Rabbit IgG whole molecule (p/n 011-0102). Lane 2: Rabbit IgG F(ab) Fragment (p/n 011-0105). Lane 3: Rabbit IgG F(c) Fragment (p/n 010-0103). Lane 4: Rabbit IgM Whole Molecule (p/n



011-0107). Lane 5: Normal Rabbit Serum (p/n B309). All samples were reduced. Load: 50 ng per lane. Block: MB-070 for 30 min at RT. Primary Antibody: Anti-Rabbit IgG (H&L) (RAT) Antibody (Min X Hu, Gt, Ms Serum Proteins) (p/n ASR1638) 1:1,000 for 60 min at RT. Secondary antibody: Anti-Rat IgG (RABBIT) Peroxidase Conjugated Antibody (p/n 612-4302) 1:40,000 in MB-070 for 30 min at RT. Predicted/Obsevered Size: 25 and 50 kDa for Rabbit IgG and Serum, 25 kDa for F(c) and F(ab), 70 and 23 kDa for IgM. Rabbit F(c) migrates slightly higher.

Please note: All products are 'FOR RESEARCH USE ONLY. NOT FOR USE IN DIAGNOSTIC OR THERAPEUTIC PROCEDURES'.