

Anti-Chicken IgG F(c) Secondary Antibody

Rabbit Polyclonal, Unconjugated

Catalog # ASR1761

Product Information

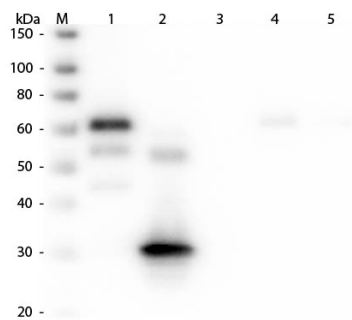
Description	Anti-CHICKEN IgG F(c) (RABBIT) Antibody
Host	Rabbit
Conjugate	Unconjugated
Target Species	Chicken
Clonality	Polyclonal
Application	WB
Physical State	Liquid (sterile filtered)
Host Isotype	IgG
Target Isotype	IgG F(c)
Buffer	0.02 M Potassium Phosphate, 0.15 M Sodium Chloride, pH 7.2
Immunogen	Chicken IgG F(c) fragment
Stabilizer	None
Preservative	0.01% (w/v) Sodium Azide

Additional Information

Shipping Condition	Wet Ice
Purity	This product was prepared from monospecific antiserum by immunoaffinity chromatography using Chicken IgG coupled to agarose beads followed by solid phase adsorption(s) to remove any unwanted reactivities. Assay by immunoelectrophoresis resulted in a single precipitin arc against anti-Rabbit Serum, Chicken IgG, Chicken IgG F(c) and Chicken Serum. No reaction was observed against Chicken IgG F(ab') ₂ .
Storage Condition	Store vial at 4° C prior to opening. This product is stable for several weeks at 4° C as an undiluted liquid. Dilute only prior to immediate use. For extended storage aliquot contents and freeze at -20° C or below. Avoid cycles of freezing and thawing.
Precautions Note	This product is for research use only and is not intended for therapeutic or diagnostic applications.

Images

Western Blot of Anti-Chicken IgG F(c) (RABBIT) Antibody (p/n ASR1761). Lane M: 3 µl Molecular Ladder. Lane 1: Chicken IgG whole molecule (p/n 003-0102). Lane 2: Chicken IgG F(c) Fragment (p/n 003-0103). Lane 3: Chicken IgG F(ab) Fragment (p/n 003-0105). Lane 4: Chicken IgM Whole Molecule (p/n 003-0107). Lane 5:



Chicken Serum (p/n D302-05). All samples were reduced.
 Load: 50 ng per lane. Block: MB-070 for 30 min at RT.
 Primary Antibody: Anti-Chicken IgG F(c) (RABBIT)
 Antibody (p/n ASR1761) 1:2,000 for 60 min at RT.
 Secondary antibody: Anti-Rabbit IgG (GOAT) Peroxidase
 Conjugated Antibody (p/n 611-103-122) 1:40,000 in
 MB-070 for 30 min at RT. Predicted/Obsevered Size: 25
 and 72 kDa for Chicken IgG and Serum, 25 kDa for F(c)
 and F(ab), 75 kDa for IgM. Chicken F(c) migrates slightly
 higher.

Please note: All products are 'FOR RESEARCH USE ONLY. NOT FOR USE IN DIAGNOSTIC OR THERAPEUTIC PROCEDURES'.