

Anti-Human IgA (alpha chain) Secondary Antibody

Rabbit Polyclonal, Unconjugated

Catalog # ASR1789

Product Information

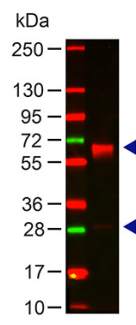
Description	Anti-HUMAN IgA (alpha chain) (RABBIT) Antibody
Host	Rabbit
Conjugate	Unconjugated
Target Species	Human
Clonality	Polyclonal
Application	WB
Physical State	Liquid (sterile filtered)
Host Isotype	IgG
Target Isotype	IgA
Buffer	0.02 M Potassium Phosphate, 0.15 M Sodium Chloride, pH 7.2
Immunogen	Human IgA alpha heavy chain
Stabilizer	None
Preservative	0.01% (w/v) Sodium Azide

Additional Information

Shipping Condition	Wet Ice
Purity	This product was prepared from monospecific antiserum by immunoaffinity chromatography using Human IgA coupled to agarose followed by solid phase adsorption(s). Assay by immunoelectrophoresis resulted in a single precipitin arc against anti-Rabbit Serum, Human IgA and Human Serum. No reaction was observed against other human heavy or light chain proteins.
Storage Condition	Store vial at 4° C prior to opening. This product is stable for several weeks at 4° C as an undiluted liquid. Dilute only prior to immediate use. For extended storage aliquot contents and freeze at -20° C or below. Avoid cycles of freezing and thawing.
Precautions Note	This product is for research use only and is not intended for therapeutic or diagnostic applications.

Images

Western Blot of Rabbit Anti-HUMAN IgA (alpha chain) Antibody Lane 1: Human IgA Load: 100 ng per lane
Primary antibody: HUMAN IgA (alpha chain) Antibody at 1:1000 for 60 min at RT Secondary antibody: DyLight 649 goat anti-rabbit at 1:20,000 for 30 min at RT Block: 5% BLOTTO 30 min at RT Predicted/Observed size: 60and 28 kDa, 60 and 28 kDa



Please note: All products are 'FOR RESEARCH USE ONLY. NOT FOR USE IN DIAGNOSTIC OR THERAPEUTIC PROCEDURES'.