

# Anti-MOUSE IgG (H&L) (Peroxidase Conjugated) Secondary Antibody

Sheep Polyclonal, Peroxidase (Horseradish)  
Catalog # ASR1811

## Product Information

---

<b>Description</b>	Anti-MOUSE IgG (H&L) (SHEEP) Antibody Peroxidase Conjugated
<b>Host</b>	Sheep
<b>Conjugate</b>	Peroxidase (Horseradish)
<b>Target Species</b>	Mouse
<b>Reactivity</b>	Mouse
<b>Clonality</b>	Polyclonal
<b>Application</b>	WB
<b>Physical State</b>	Lyophilized
<b>Host Isotype</b>	IgG
<b>Target Isotype</b>	IgG (H&L)
<b>Buffer</b>	0.02 M Potassium Phosphate, 0.15 M Sodium Chloride, pH 7.2
<b>Immunogen</b>	Anti-Mouse IgG whole molecule was produced by repeated immunization with Mouse IgG whole molecule in sheep.
<b>Reconstitution Volume</b>	1.0 mL
<b>Reconstitution Buffer</b>	Restore with deionized water (or equivalent)
<b>Stabilizer</b>	10 mg/mL Bovine Serum Albumin (BSA) - Immunoglobulin and Protease free
<b>Preservative</b>	0.01% (w/v) Gentamicin Sulfate. Do NOT add Sodium Azide!

## Additional Information

---

<b>Shipping Condition</b>	Ambient
<b>Application Note</b>	Suitable for immunoblotting (western or dot blot), ELISA, immunoperoxidase electron microscopy and immunohistochemistry as well as other peroxidase-antibody based enzymatic assays requiring lot-to-lot consistency.
<b>Purity</b>	This product was prepared from monospecific antiserum by immunoaffinity chromatography using Mouse IgG coupled to agarose beads followed by solid phase adsorption(s) to remove any unwanted reactivities. Assay by immunoelectrophoresis resulted in a single precipitin arc against anti-Peroxidase, anti-Sheep Serum, Mouse IgG and Mouse Serum.
<b>Storage Condition</b>	Store vial at 4° C prior to restoration. For extended storage aliquot contents and freeze at -20° C or below. Avoid cycles of freezing and thawing. Centrifuge product if not completely clear after standing at room temperature. This product is stable for several weeks at 4° C as an undiluted liquid. Dilute only prior to immediate use.
<b>Precautions Note</b>	This product is for research use only and is not intended for therapeutic or diagnostic applications.

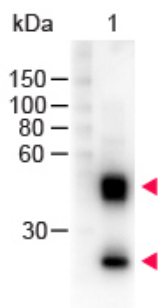
## Background

---

Anti-Mouse IgG whole molecule antibody generated in sheep detects specifically Mouse IgG whole molecule. This secondary antibody anti-Mouse is ideal for investigators who routinely perform ELISA, Sandwich ELISA, titration assays, western-blot, immunoprecipitation and more generally immunoassays.

## Images

---



Western Blot of Peroxidase conjugated Sheep anti-Mouse IgG antibody. Lane 1: Mouse IgG. Lane 2: None. Load: 100 ng per lane. Primary antibody: none. Secondary antibody: Peroxidase sheep secondary antibody at 1:1,000 for 60 min at RT. Block: MB-070 for 30 min at RT. Predicted/Observed size: 55 and 28 kDa, 55 and 28 kDa for Mouse IgG. Other band(s): none.

Please note: All products are 'FOR RESEARCH USE ONLY. NOT FOR USE IN DIAGNOSTIC OR THERAPEUTIC PROCEDURES'.