

# Anti-Rat IgG (H&L) (Peroxidase Conjugated) Secondary Antibody

Sheep Polyclonal, Peroxidase (Horseradish)  
Catalog # ASR1833

## Product Information

---

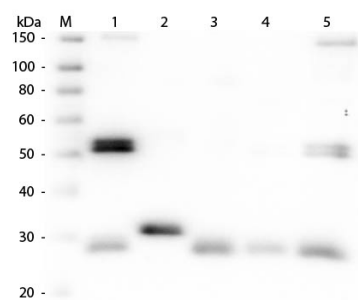
<b>Description</b>	Anti-RAT IgG (H&L) (SHEEP) Antibody Peroxidase Conjugated
<b>Host</b>	Sheep
<b>Conjugate</b>	Peroxidase (Horseradish)
<b>Target Species</b>	Rat
<b>Clonality</b>	Polyclonal
<b>Application</b>	WB
<b>Physical State</b>	Lyophilized
<b>Host Isotype</b>	IgG
<b>Target Isotype</b>	IgG (H&L)
<b>Buffer</b>	0.02 M Potassium Phosphate, 0.15 M Sodium Chloride, pH 7.2
<b>Immunogen</b>	Rat IgG whole molecule
<b>Reconstitution Volume</b>	1.0 mL
<b>Reconstitution Buffer</b>	Restore with deionized water (or equivalent)
<b>Stabilizer</b>	10 mg/mL Bovine Serum Albumin (BSA) - Immunoglobulin and Protease free
<b>Preservative</b>	0.01% (w/v) Gentamicin Sulfate. Do NOT add Sodium Azide!

## Additional Information

---

<b>Shipping Condition</b>	Ambient
<b>Application Note</b>	This product has been assayed against 1.0 $\mu$ g of Rat IgG in a standard capture ELISA using ABTS (2,2'-azino-bis-[3-ethylbenthiazoline-6-sulfonic acid]) code # ABTS-100 as a substrate for 30 minutes at room temperature. A working dilution of 1:5,000 to 1:25,000 of the reconstitution concentration is suggested for this product.
<b>Purity</b>	This product was prepared from monospecific antiserum by immunoaffinity chromatography using Rat IgG coupled to agarose. Assay by immunoelectrophoresis resulted in a single precipitin arc against anti-Peroxidase, anti-Sheep Serum, Rat IgG and Rat Serum.
<b>Storage Condition</b>	Store vial at 4° C prior to restoration. For extended storage aliquot contents and freeze at -20° C or below. Avoid cycles of freezing and thawing. Centrifuge product if not completely clear after standing at room temperature. This product is stable for several weeks at 4° C as an undiluted liquid. Dilute only prior to immediate use.
<b>Precautions Note</b>	This product is for research use only and is not intended for therapeutic or diagnostic applications.

# Images



Western Blot of Anti-Rat IgG (H&L) (SHEEP) Antibody (p/n 612-6102). Lane M: 3 µl Molecular Ladder. Lane 1: Rat IgG whole molecule (p/n 012-0102). Lane 2: Rat IgG F(c) Fragment (p/n 012-0103). Lane 3: Rat IgG F(ab) Fragment (p/n 012-0105). Lane 4: Rat IgM Whole Molecule (p/n 012-0107). Lane 5: Rat Serum (p/n D310-05). All samples were reduced. Load: 50 ng per lane. Block: MB-070 for 30 min at RT. Primary Antibody: Anti-Rat IgG (H&L) (SHEEP) Antibody (p/n 612-6102) 1:1,000 for 60 min at RT. Secondary Antibody: Anti-Sheep IgG (DONKEY) Peroxidase Conjugated Antibody (p/n 613-703-168) 1:40,000 in MB-070 for 30 min at RT. Predicted/Obsevered Size: 25 and 55 kDa for Rat IgG and Serum, 25 kDa for F(c) and F(ab), 78 and 25 kDa for IgM. Rat F(c) migrates slightly higher.

Please note: All products are 'FOR RESEARCH USE ONLY. NOT FOR USE IN DIAGNOSTIC OR THERAPEUTIC PROCEDURES'.