

# F(ab')<sub>2</sub> Anti-Rabbit IgG (H&L) (Fluorescein Conjugated) Pre-Adsorbed Secondary Antibody

Goat Polyclonal, Fluorescein (FITC)

Catalog # ASR1860

## Product Information

---

<b>Description</b>	F(ab') <sub>2</sub> Anti-RABBIT IgG (H&L) (GOAT) Antibody Fluorescein Conjugated Min X Bv Ch Gt GP Ham Hs Hu Ms Rt & Sh Serum Proteins
<b>Host</b>	Goat
<b>Conjugate</b>	Fluorescein (FITC)
<b>FP Value</b>	4.1 moles Fluorescein (FITC) per mole of IgG F(ab') <sub>2</sub>
<b>Target Species</b>	Rabbit
<b>Clonality</b>	Polyclonal
<b>Application</b>	WB, DB
<b>Physical State</b>	Lyophilized
<b>Host Isotype</b>	IgG F(ab') <sub>2</sub>
<b>Target Isotype</b>	IgG (H&L)
<b>Buffer</b>	0.02 M Potassium Phosphate, 0.15 M Sodium Chloride, pH 7.2
<b>Immunogen</b>	Rabbit IgG whole molecule
<b>Reconstitution Volume</b>	500 $\mu$ L
<b>Reconstitution Buffer</b>	Restore with deionized water (or equivalent)
<b>Stabilizer</b>	10 mg/mL Bovine Serum Albumin (BSA) - Immunoglobulin and Protease free
<b>Preservative</b>	0.01% (w/v) Sodium Azide

## Additional Information

---

<b>Shipping Condition</b>	Ambient
<b>Application Note</b>	Suitable for immunomicroscopy and flow cytometry or FACS analysis as well as other antibody based fluorescent assays requiring extremely low background levels, absence of F(c) mediated binding, lot-to-lot consistency, high titer and specificity.
<b>Purity</b>	This product was prepared from monospecific antiserum by immunoaffinity chromatography using Rabbit IgG coupled to agarose beads followed by solid phase adsorption(s) to remove any unwanted reactivities, pepsin digestion and chromatographic separation. Assay by immunoelectrophoresis resulted in a single precipitin arc against anti-Fluorescein, anti-Goat Serum, Rabbit IgG and Rabbit Serum. No reaction was observed against anti-Pepsin, anti-Goat IgG F(c) or Bovine, Chicken, Goat, Guinea Pig, Hamster, Horse, Human, Mouse, Rat and Sheep Serum Proteins.
<b>Storage Condition</b>	Store vial at 4° C prior to restoration. For extended storage aliquot contents and freeze at -20° C or below. Avoid cycles of freezing and thawing. Centrifuge product if not completely clear after standing at room temperature. This product is stable for several weeks at 4° C as an undiluted liquid. Dilute only prior to immediate use.

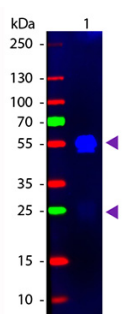
## Precautions Note

This product is for research use only and is not intended for therapeutic or diagnostic applications.

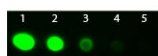
## Background

This product is designed for immunofluorescence microscopy, fluorescence based plate assays (FLISA) and fluorescent western blotting. This product is also suitable for multiplex analysis, including multicolor imaging, utilizing various commercial platforms.

## Images



Western blot of Fluorescein conjugated Goat F(ab')<sub>2</sub> Anti-Rabbit IgG (Pre-Adsorbed) secondary antibody. Lane 1: Rabbit IgG. Lane 2: None. Load: 50 ng per lane. Primary antibody: None. Secondary antibody: Fluorescein goat secondary antibody at 1:1,000 for 60 min at RT. Blocking: MB-070 for 30 min at RT. Predicted/Observed size: 25 & 55 kDa, 25 & 55 kDa for Rabbit IgG. Other band(s): None.



Dot Blot of Goat F(ab)<sub>2</sub> anti-Rabbit IgG Antibody Fluorescein Conjugated Pre-Absorbed. Antigen: Rabbit IgG. Load: Lane 1 - 100 ng Lane 2 - 33.3 ng Lane 3 - 11.1 ng Lane 4 - 3.70 ng Lane 5 - 1.23 ng. Primary antibody: n/a. Secondary antibody: Goat F(ab)<sub>2</sub> anti-Rabbit IgG Antibody Fluorescein Conjugated Pre-Absorbed at 1:1,000 for 1 HR at RT. Block: MB-070 for 1 HR at RT.

Please note: All products are 'FOR RESEARCH USE ONLY. NOT FOR USE IN DIAGNOSTIC OR THERAPEUTIC PROCEDURES'.