

Rat IgG (Agarose Conjugated)

Catalog # ASR1874

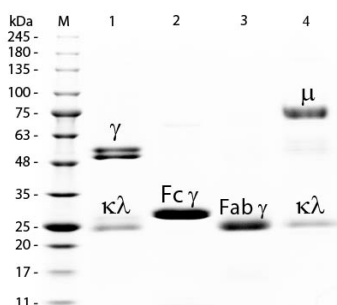
Product Information

| | |
|--------------------------|------------------------------------------------------------|
| Description | RAT IgG whole molecule Agarose Conjugated |
| Conjugate | Unconjugated |
| Physical State | Suspension of agarose beads |
| Buffer | 0.02 M Potassium Phosphate, 0.15 M Sodium Chloride, pH 7.2 |
| Species of Origin | Rat |
| Stabilizer | None |
| Preservative | 0.01% (w/v) Sodium Azide |

Additional Information

| | |
|---------------------------|----------------------------------------------------------------------------------------------------------------------------------------------------------------------------------------------------------------------------------------------------------------------------|
| Shipping Condition | Wet Ice |
| Purity | This product is normal Rat IgG coupled to activated agarose. A single precipitin arc was observed against anti-Rat Serum when assayed by immunoelectrophoresis prior to coupling to the beads. Sufficient capacity is provided to bind a minimum of 10 mg of anti-Rat IgG. |
| Storage Condition | Store vial at 4° C prior to opening. DO NOT FREEZE. |
| Precautions Note | This product is for research use only and is not intended for therapeutic or diagnostic applications. |

Images



SDS-PAGE of Rat IgG Whole Molecule Agarose Conjugated (p/n ASR1874). Lane M: 3 µL Opal Prestained Marker (p/n MB-210-0500). Lane 1: Reduced Rat IgG Whole Molecule Agarose Conjugated (p/n ASR1874). Lane 2: Reduced Rat IgG F(c) Fragment (p/n 012-0103). Lane 3: Reduced Rat IgG F(ab) Fragment (p/n 012-0105). Lane 4: Reduced Rat IgM Whole Molecule (p/n 012-0107). Load: 1 µg of IgG, F(c), F(ab); 1.5 µg of IgM. Predicted/Observed size: IgG at 55 and 25 kDa; F(c) at 25 kDa; F(ab) at 25 kDa; IgM at 78 and 25 kDa. Observed F(c) Fragment migrates slightly higher.

Please note: All products are 'FOR RESEARCH USE ONLY. NOT FOR USE IN DIAGNOSTIC OR THERAPEUTIC PROCEDURES'.