

Anti-Monkey IgA (alpha chain) Secondary Antibody

Goat Polyclonal, Unconjugated

Catalog # ASR2002

Product Information

Description	Anti-MONKEY IgA (alpha chain) (GOAT) Antibody
Host	Goat
Conjugate	Unconjugated
Target Species	Monkey
Clonality	Polyclonal
Application	WB
Physical State	Liquid (sterile filtered)
Host Isotype	IgG
Target Isotype	IgA
Buffer	0.125 M Sodium Borate, 0.075 M Sodium Chloride, 0.005 M EDTA, pH 8.0
Immunogen	Anti-Monkey IgA (alpha chain) was produced by repeated immunization with monkey IgA alpha heavy chain in goat.
Preservative	0.01% (w/v) Sodium Azide

Additional Information

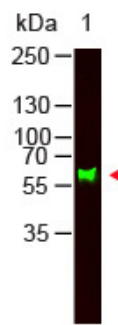
Shipping Condition	Wet Ice
Application Note	Anti-Monkey IgA (alpha chain) is suitable for use in immunoelectrophoresis, western-blot, competitive western-blot, ELISA and competitive ELISA assays. Specific conditions for reactivity and signal detection should be optimized by the end user.
Purity	This product was prepared from monospecific antiserum by immunoaffinity chromatography using Monkey IgA coupled to agarose beads followed by solid phase adsorption(s) to remove any unwanted reactivities. Assay by immunoelectrophoresis resulted in a single precipitin arc against anti-Goat Serum, Monkey IgA and Monkey Serum. No reaction was observed against Monkey IgG or Monkey IgM. Specificity was confirmed by ELISA at less than 1% cross reactivity against other monkey heavy or light chain isotypes.
Storage Condition	Store vial at 4° C prior to opening. This product is stable for several weeks at 4° C as an undiluted liquid. Dilute only prior to immediate use. For extended storage aliquot contents and freeze at -20° C or below. Avoid cycles of freezing and thawing.
Precautions Note	This product is for research use only and is not intended for therapeutic or diagnostic applications.

Background

Anti-Monkey IgA (alpha chain) antibody generated in goat detects specifically monkey IgA (alpha chain).

This secondary antibody anti-Monkey is ideal for investigators who routinely perform ELISA, Sandwich ELISA, titration assays, western-blot, immunoprecipitation and more generally immunoassays.

Images



Western Blot of Goat anti-Monkey IgA (alpha chain) antibody. Lane 1: Human IgA. Lane 2: None. Load: 100 ng per lane. Primary antibody: Monkey IgA (alpha chain) antibody at 1:1000 for overnight at 4°C. Secondary antibody: DyLight™ 800 goat secondary antibody at 1:20,000 for 30 min at RT. Block: MB-070 30 min at RT. Predicted/Observed size: 60 kDa, 60 kDa for Monkey IgA. Other Band(s): None.

This table displays additional reactivity among various species of serum and immunoglobulin. A (+) indicates antibody reactivity to the corresponding target.

Product	Gt-a-Monkey IgG	Gt-a-Monkey IgA	Gt-a-Monkey IgM
Rhesus Serum	+	+	+
Baboon Serum	+	+	+
Cynomolgus Serum	+	+	+
Rhesus IgG	+		
Human IgA		+	
Human IgM			+

Please note: All products are 'FOR RESEARCH USE ONLY. NOT FOR USE IN DIAGNOSTIC OR THERAPEUTIC PROCEDURES'.