

Anti-GOAT IgG (H&L) (Alkaline Phosphatase Conjugated) Secondary Antibody

Rabbit Polyclonal, Alkaline Phosphatase (Calf Intestine)

Catalog # ASR2030

Product Information

Description	Anti-GOAT IgG (H&L) (RABBIT) Antibody Alkaline Phosphatase Conjugated
Host	Rabbit
Conjugate	Alkaline Phosphatase (Calf Intestine)
Target Species	Goat
Clonality	Polyclonal
Application	WB, DB
Physical State	Liquid (sterile filtered)
Host Isotype	IgG
Target Isotype	IgG (H&L)
Buffer	0.05 M Tris Chloride, 0.15M Sodium Chloride, 0.001M Magnesium Chloride, 0.0001M Zinc Chloride, 50% (v/v) Glycerol; pH 8.0
Immunogen	Goat IgG whole molecule
Stabilizer	10 mg/mL Bovine Serum Albumin (BSA) - Immunoglobulin and Protease free
Preservative	0.1% (w/v) Sodium Azide

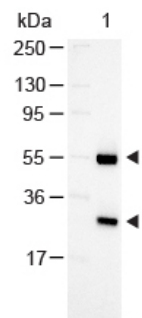
Additional Information

Shipping Condition	Wet Ice
Application Note	Secondary antibody reagents are ideal for western blotting, Immunohistochemistry, ELISA, Fluorescence Microscopy, Flow Cytometry as well as other antibody detection methods
Purity	Anti-Goat Secondary Antibody was prepared from monospecific antiserum by immunoaffinity chromatography using Goat IgG coupled to agarose beads followed by solid phase adsorption(s) to remove any unwanted reactivities. Assay by immunoelectrophoresis resulted in a single precipitin arc against anti-Alkaline Phosphatase (calf intestine), anti-Rabbit Serum, Goat IgG and Goat Serum.
Storage Condition	Store secondary antibody at 4° C before opening. DO NOT FREEZE. Anti-Goat secondary antibodies are stable at 4° C as an undiluted liquid. Dilute only prior to immediate use. Freezing alkaline phosphatase conjugates will result in a substantial loss of enzymatic activity.
Precautions Note	This product is for research use only and is not intended for therapeutic or diagnostic applications.

Background

Secondary Antibodies are available in a variety of formats and conjugate types. When choosing a secondary antibody product, consideration must be given to species and immunoglobulin specificity, conjugate type, fragment and chain specificity, level of cross-reactivity, and host-species source and fragment composition.

Images



Western Blot of Rabbit anti-Goat Antibody Alkaline Phosphatase Conjugated Lane 1: Goat IgG Load: 100 ng per lane Secondary antibody: Alkaline Phosphatase Conjugated Rabbit Anti-Goat Antibody at 1:1000 for 60 min at RT Block: MB-070 30 min RT Predicted/Observed size: 55 and 28 kDa, 55 and 28 kDa



Dot Blot of Goat IgG (H&L) Secondary Antibody Alkaline Phosphatase Conjugated Antigen: Goat IgG Load: Lane 1 - 200ng Lane 2 - 66.7ng Lane 3 - 22.2ng Lane 4 - 7.4ng Lane 5 - 2.5ng Primary antibody: none Secondary antibody: Goat IgG (H&L) Secondary Antibody Alkaline Phosphatase Conjugated at 1:1,000 for 60 min at RT. Detected using Alkaline Phosphatase Substrate. Block: MB-070 60 min at RT.

Please note: All products are 'FOR RESEARCH USE ONLY. NOT FOR USE IN DIAGNOSTIC OR THERAPEUTIC PROCEDURES'.