

Anti-Horse IgG (H&L) (Texas Red™ Conjugated) Secondary Antibody

Rabbit Polyclonal, Texas Red®

Catalog # ASR2039

Product Information

| | |
|------------------------------|--|
| Description | Anti-HORSE IgG (H&L) (RABBIT) Antibody Texas Red™ Conjugated |
| Host | Rabbit |
| Conjugate | Texas Red® |
| FP Value | 1.7 moles Texas Red® per mole of IgG |
| Target Species | Horse |
| Clonality | Polyclonal |
| Application | WB |
| Physical State | Lyophilized |
| Host Isotype | IgG |
| Target Isotype | IgG (H&L) |
| Buffer | 0.02 M Potassium Phosphate, 0.15 M Sodium Chloride, pH 7.2 |
| Immunogen | Horse IgG whole molecule |
| Reconstitution Volume | 1.0 mL |
| Reconstitution Buffer | Restore with deionized water (or equivalent) |
| Stabilizer | 10 mg/mL Bovine Serum Albumin (BSA) - Immunoglobulin and Protease free |
| Preservative | 0.01% (w/v) Sodium Azide |

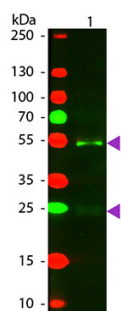
Additional Information

| | |
|---------------------------|---|
| Shipping Condition | Ambient |
| Purity | This product was prepared from monospecific antiserum by immunoaffinity chromatography using Horse IgG coupled to agarose beads. Assay by immunoelectrophoresis resulted in a single precipitin arc against anti-Rabbit Serum, Horse IgG and Horse Serum. |
| Storage Condition | Store vial at 4° C prior to restoration. For extended storage aliquot contents and freeze at -20° C or below. Avoid cycles of freezing and thawing. Centrifuge product if not completely clear after standing at room temperature. This product is stable for several weeks at 4° C as an undiluted liquid. Dilute only prior to immediate use. |
| Precautions Note | This product is for research use only and is not intended for therapeutic or diagnostic applications. |

Background

This product is designed for immunofluorescence microscopy, fluorescence based plate assays (FLISA) and fluorescent western blotting. This product is also suitable for multiplex analysis, including multicolor imaging, utilizing various commercial platforms.

Images



Western Blot of Texas Red™ Rabbit Anti-Horse IgG secondary antibody. Lane 1: Horse IgG. Lane 2: None. Load: 50 ng per lane. Primary antibody: None. Secondary antibody: Texas Red™ rabbit secondary antibody at 1:1,000 for 60 min at RT. Blocking: MB-070 for 30 min at RT. Predicted/Observed size: 25 & 55 kDa, 25 & 55 kDa for Horse IgG. Other band(s): None.

Please note: All products are 'FOR RESEARCH USE ONLY. NOT FOR USE IN DIAGNOSTIC OR THERAPEUTIC PROCEDURES'.