

Mouse IgG F(ab')₂ Fluorescein

Catalog # ASR2136

Product Information

Description	MOUSE IgG F(ab') ₂ fragment Fluorescein conjugated
Conjugate	Fluorescein (FITC)
FP Value	2.5 moles Fluorescein (FITC) per mole of Mouse IgG F(ab') ₂
Physical State	Lyophilized
Host Isotype	IgG F(ab') ₂
Buffer	0.01 M Sodium Phosphate, 0.15 M Sodium Chloride, pH 7.2
Species of Origin	Mouse
Reconstitution Volume	1.0 mL
Reconstitution Buffer	Restore with deionized water (or equivalent)
Stabilizer	10 mg/mL Bovine Serum Albumin (BSA) - Immunoglobulin and Protease free
Preservative	0.01% (w/v) Thimerosal

Additional Information

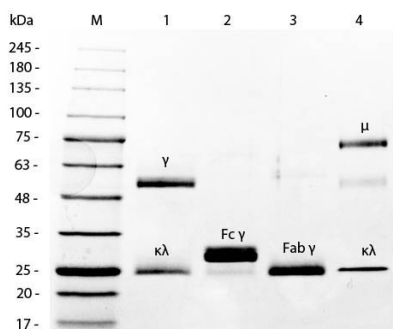
Shipping Condition	Ambient
Purity	This product was prepared from normal serum by delipidation, salt fractionation and ion change chromatography followed by pepsin digestion and extensive dialysis against the buffer stated above. Assay by immunoelectrophoresis resulted in a single precipitin arc against anti-Fluorescein, anti-Mouse IgG, anti-Mouse IgG F(ab') ₂ and anti-Mouse Serum. No reaction was observed against anti-Mouse IgG F(c) or anti-Pepsin.
Storage Condition	Store vial at 4° C prior to restoration. For extended storage aliquot contents and freeze at -20° C or below. Avoid cycles of freezing and thawing. Centrifuge product if not completely clear after standing at room temperature. This product is stable for several weeks at 4° C as an undiluted liquid. Dilute only prior to immediate use.
Precautions Note	This product is for research use only and is not intended for therapeutic or diagnostic applications.

Background

This product is designed for immunofluorescence microscopy, fluorescence based plate assays (FLISA) and fluorescent western blotting. This product is also suitable for multiplex analysis, including multicolor imaging, utilizing various commercial platforms.

Images

SDS-PAGE of Mouse IgG F(ab')₂ Fragment Fluorescein Conjugated (p/n ASR2136). Lane 1: 5 µL Opal Prestained



Marker (p/n MB-210-0500). Lane 2: Reduced Mouse IgG Whole Molecule (p/n 010-0102). Lane 3: Reduced Mouse F(c) Fragment (p/n 010-0103). Lane 4: Reduced Mouse F(ab')₂ Fragment Fluorescein Conjugated (p/n ASR2136). Lane 5: Mouse IgM Kappa Myeloma Protein (p/n 010-0107). Load: 1 µg per lane. Predicted/Observed size: IgG at 50 and 25 kDa; F(c) at 25 kDa; F(ab')₂ at 25 kDa; IgM K at 70 and 23 kDa. Observed F(c) Fragment migrates slightly higher.

Please note: All products are 'FOR RESEARCH USE ONLY. NOT FOR USE IN DIAGNOSTIC OR THERAPEUTIC PROCEDURES'.