

# Mouse IgG Fab Texas Red™

Catalog # ASR2138

## Product Information

---

<b>Description</b>	MOUSE IgG F(ab) fragment Texas Red™ conjugated
<b>Conjugate</b>	Texas Red®
<b>FP Value</b>	2.4 moles Texas Red® per mole of Mouse IgG F(ab)
<b>Physical State</b>	Lyophilized
<b>Host Isotype</b>	IgG F(ab)
<b>Buffer</b>	0.02 M Potassium Phosphate, 0.15 M Sodium Chloride, pH 7.2
<b>Species of Origin</b>	Mouse
<b>Reconstitution Volume</b>	1.0 mL
<b>Reconstitution Buffer</b>	Restore with deionized water (or equivalent)
<b>Stabilizer</b>	10 mg/mL Bovine Serum Albumin (BSA) - Immunoglobulin and Protease free
<b>Preservative</b>	0.01% (w/v) Sodium Azide

## Additional Information

---

<b>Shipping Condition</b>	Ambient
<b>Purity</b>	This product was prepared from normal serum by delipidation, salt fractionation, ion exchange chromatography followed by papain digestion and extensive dialysis against the buffer stated above. Assay by immunoelectrophoresis resulted in a single precipitin arc against anti-Mouse IgG, anti-Mouse IgG F(ab') <sub>2</sub> and anti-Mouse Serum. No reaction was observed against anti-Mouse IgG F(c) or anti-Papain.
<b>Storage Condition</b>	Store vial at 4° C prior to restoration. For extended storage aliquot contents and freeze at -20° C or below. Avoid cycles of freezing and thawing. Centrifuge product if not completely clear after standing at room temperature. This product is stable for several weeks at 4° C as an undiluted liquid. Dilute only prior to immediate use.
<b>Precautions Note</b>	This product is for research use only and is not intended for therapeutic or diagnostic applications.

## Background

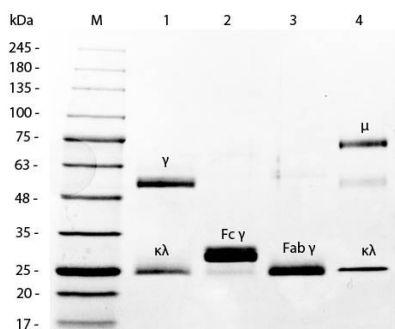
---

This product is designed for immunofluorescence microscopy, fluorescence based plate assays (FLISA) and fluorescent western blotting. This product is also suitable for multiplex analysis, including multicolor imaging, utilizing various commercial platforms.

## Images

---

SDS-PAGE of Mouse IgG F(ab) Fragment Texas Red™  
Conjugated (p/n ASR2138). Lane 1: 5 µL Opal Prestained



Marker (p/n MB-210-0500). Lane 2: Reduced Mouse IgG Whole Molecule (p/n 010-0102). Lane 3: Reduced Mouse F(c) Fragment (p/n 010-0103). Lane 4: Reduced Mouse F(ab) Fragment Texas Red™ Conjugated (p/n ASR2138). Lane 5: Mouse IgM Kappa Myeloma Protein (p/n 010-0107). Load: 1 µg per lane. Predicted/Observed size: IgG at 50 and 25 kDa; F(c) at 25 kDa; F(ab) at 25 kDa; IgM K at 70 and 23 kDa. Observed F(c) Fragment migrates slightly higher.

Please note: All products are 'FOR RESEARCH USE ONLY. NOT FOR USE IN DIAGNOSTIC OR THERAPEUTIC PROCEDURES'.