

# Anti-Human IgG (gamma chain) (Rhodamine Conjugated) Secondary Antibody

Rabbit Polyclonal, Rhodamine (TRITC)

Catalog # ASR2179

## Product Information

---

<b>Description</b>	Anti-HUMAN IgG (gamma chain) (RABBIT) Antibody Rhodamine Conjugated
<b>Host</b>	Rabbit
<b>Conjugate</b>	Rhodamine (TRITC)
<b>FP Value</b>	3.1 moles Rhodamine (TRITC) per mole of IgG
<b>Target Species</b>	Human
<b>Clonality</b>	Polyclonal
<b>Application</b>	WB
<b>Physical State</b>	Lyophilized
<b>Host Isotype</b>	IgG
<b>Target Isotype</b>	IgG (gamma chain)
<b>Buffer</b>	0.02 M Potassium Phosphate, 0.15 M Sodium Chloride, pH 7.2
<b>Immunogen</b>	Human IgG gamma heavy chain
<b>Reconstitution Volume</b>	1.0 mL
<b>Reconstitution Buffer</b>	Restore with deionized water (or equivalent)
<b>Stabilizer</b>	10 mg/mL Bovine Serum Albumin (BSA) - Immunoglobulin and Protease free
<b>Preservative</b>	0.01% (w/v) Sodium Azide

## Additional Information

---

<b>Shipping Condition</b>	Ambient
<b>Purity</b>	This product was prepared from monospecific antiserum by immunoaffinity chromatography using Human IgG coupled to agarose beads followed by solid phase adsorption(s) to remove any unwanted reactivities. Assay by immunoelectrophoresis resulted in a single precipitin arc against anti-Rabbit Serum, Human IgG, and Human Serum. Minimal cross reactivity was observed by ELISA against other Human heavy and light chain proteins.
<b>Storage Condition</b>	Store vial at 4° C prior to restoration. For extended storage aliquot contents and freeze at -20° C or below. Avoid cycles of freezing and thawing. Centrifuge product if not completely clear after standing at room temperature. This product is stable for several weeks at 4° C as an undiluted liquid. Dilute only prior to immediate use.
<b>Precautions Note</b>	This product is for research use only and is not intended for therapeutic or diagnostic applications.

## Background

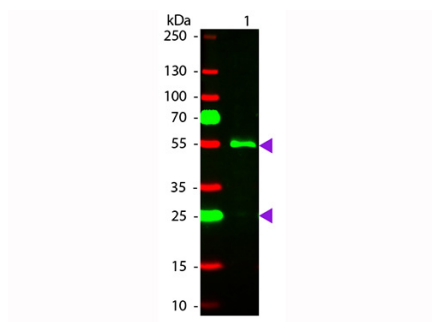
---

This product is designed for immunofluorescence microscopy, fluorescence based plate assays (FLISA) and

fluorescent western blotting. This product is also suitable for multiplex analysis, including multicolor imaging, utilizing various commercial platforms.

## Images

---



Western Blot of Rhodamine conjugated Rabbit anti-Human IgG (gamma chain) secondary antibody. Lane 1: Human IgG. Lane 2: none. Load: 50 ng per lane. Primary antibody: none. Secondary antibody: Rhodamine rabbit secondary antibody at 1:1,000 for 60 min at RT. Block: MB-070 for 30 min at RT. Predicted/Observed size: 55 kDa, 55 kDa for Human IgG (gamma chain). Other band(s): none.

Please note: All products are 'FOR RESEARCH USE ONLY. NOT FOR USE IN DIAGNOSTIC OR THERAPEUTIC PROCEDURES'.