

Anti-Human IgG (H&L) (Alkaline Phosphatase Conjugated) Secondary Antibody

Sheep Polyclonal, Alkaline Phosphatase (Calf Intestine)

Catalog # ASR2189

Product Information

Description	Anti-HUMAN IgG (H&L) (SHEEP) Antibody Alkaline Phosphatase Conjugated
Host	Sheep
Conjugate	Alkaline Phosphatase (Calf Intestine)
Target Species	Human
Reactivity	Human
Clonality	Polyclonal
Application	DB
Physical State	Liquid (sterile filtered)
Host Isotype	IgG
Target Isotype	IgG (H&L)
Buffer	0.05 M Tris Chloride, 0.15M Sodium Chloride, 0.001M Magnesium Chloride, 0.0001M Zinc Chloride, 50% (v/v) Glycerol; pH 8.0
Immunogen	Human IgG whole molecule
Species of Origin	Human
Stabilizer	10 mg/mL Bovine Serum Albumin (BSA) - Immunoglobulin and Protease free
Preservative	0.1% (w/v) Sodium Azide

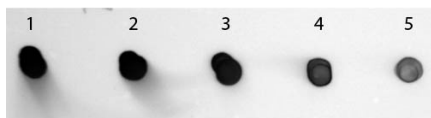
Additional Information

Shipping Condition	Wet Ice
Application Note	Anti-HUMAN IgG (H&L) (SHEEP) Antibody is suitable for immunoblotting (western or dot blot), ELISA, immunoperoxidase electron microscopy and immunohistochemistry as well as other peroxidase-antibody based enzymatic assays requiring lot-to-lot consistency.
Purity	Anti-Human IgG (H&L) (SHEEP) Antibody was prepared from monospecific antiserum by immunoaffinity chromatography using Human IgG coupled to agarose beads followed by solid phase adsorption(s) to remove any unwanted reactivities. Assay by immunoelectrophoresis resulted in a single precipitin arc against anti-Alkaline Phosphatase (calf intestine), anti-Sheep Serum, Human IgG and Human Serum.
Storage Condition	Store vial at 4° C before opening. DO NOT FREEZE. This product is stable at 4° C as an undiluted liquid. Dilute only prior to immediate use. Freezing alkaline phosphatase conjugates will result in a substantial loss of enzymatic activity.
Precautions Note	This product is for research use only and is not intended for therapeutic or diagnostic applications.

Background

Human IgG whole molecule antibody generated in sheep detects specifically human IgG whole molecule. Anti-Human IgG antibody is ideal for investigators involved in serum protein component research.

Images



Dot Blot of Sheep anti-Human IgG Antibody Alkaline Phosphatase Conjugated. Antigen: Human IgG. Load: Lane 1 - 200 ng Lane 2 - 66.67 ng Lane 3 - 22.22 ng Lane 4 - 7.41 ng Lane 5 - 2.47 ng. Primary antibody: none. Secondary antibody: Sheep anti-Human IgG Antibody Alkaline Phosphatase Conjugated at 1:1,000 for 60 min at RT. Block: MB-070 for 60 min at RT. Visualized using NBT-100 Alkaline Phosphatase Substrate for 30 seconds at RT.

Please note: All products are 'FOR RESEARCH USE ONLY. NOT FOR USE IN DIAGNOSTIC OR THERAPEUTIC PROCEDURES'.