

Anti-Mouse IgG (gamma 1, 2a, 2b and 3 chain) Secondary Antibody

Rabbit Polyclonal, Unconjugated
Catalog # ASR2202

Product Information

Description	Anti-MOUSE IgG (gamma 1, 2a, 2b and 3 chain) (RABBIT) Antibody
Host	Rabbit
Conjugate	Unconjugated
Target Species	Mouse
Clonality	Polyclonal
Physical State	Liquid (sterile filtered)
Host Isotype	IgG
Target Isotype	IgG (gamma 1, 2a, 2b and 3 chain)
Buffer	0.02 M Potassium Phosphate, 0.15 M Sodium Chloride, pH 7.2
Immunogen	highly purified mouse IgG gamma 1, gamma 2a, gamma 2b and gamma 3 proteins
Stabilizer	None
Preservative	0.01% (w/v) Sodium Azide

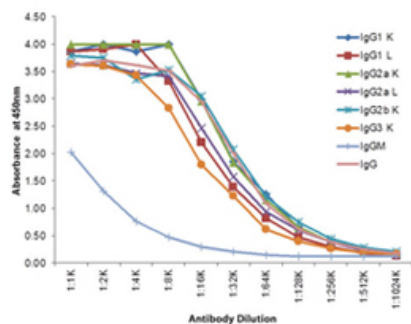
Additional Information

Shipping Condition	Wet Ice
Application Note	Mouse IgG secondary antibody is available in a variety of formats.
Purity	Anti-Mouse IgG subclass pan reactive Secondary Antibody was prepared from monospecific antiserum by immunoaffinity chromatography using antigens coupled to agarose beads followed by solid phase adsorption(s) to remove any unwanted reactivities. This product shows balanced reactivity to Mouse IgG1, IgG2a, IgG2b and IgG3 proteins and is suitable to screen IgG class hybridoma clones. Minimal cross reactivity is observed against other Mouse immunoglobulin classes or light chain proteins.
Storage Condition	Store vial at 4° C prior to opening. This product is stable for several weeks at 4° C as an undiluted liquid. Dilute only prior to immediate use. For extended storage aliquot contents and freeze at -20° C or below. Avoid cycles of freezing and thawing.
Precautions Note	This product is for research use only and is not intended for therapeutic or diagnostic applications.

Background

Anti-Mouse IgG subclass pan reactive Secondary Antibody is designed for ELISA, Immunohistochemistry, western blotting as well as other anti-IgG antibody based assays.

Images



Indirect ELISA of Rabbit Anti-Mouse IgG (gamma 1, 2a, 2b, and 3) antibody. Antigen: purified mouse IgG heavy and light chains. Coating amount: 0.1 μ g per well. Primary antibody: Rabbit Anti-Mouse IgG (Gamma 1, 2a, 2b, and 3) HRP conjugated Antibody. Dilution series: 2-fold. Substrate: TMB (p/n TMBE-0100).

Please note: All products are 'FOR RESEARCH USE ONLY. NOT FOR USE IN DIAGNOSTIC OR THERAPEUTIC PROCEDURES'.