

# Anti-Rabbit IgG (H&L) (Alkaline Phosphatase Conjugated) Secondary Antibody

Donkey Polyclonal, Alkaline Phosphatase (Calf Intestine)

Catalog # ASR2222

## Product Information

---

<b>Description</b>	Anti-RABBIT IgG (H&L) (DONKEY) Antibody Alkaline Phosphatase Conjugated
<b>Host</b>	Donkey
<b>Conjugate</b>	Alkaline Phosphatase (Calf Intestine)
<b>Target Species</b>	Rabbit
<b>Clonality</b>	Polyclonal
<b>Application</b>	WB
<b>Physical State</b>	Liquid (sterile filtered)
<b>Host Isotype</b>	IgG
<b>Target Isotype</b>	IgG (H&L)
<b>Buffer</b>	0.05 M Tris Chloride, 0.15M Sodium Chloride, 0.001M Magnesium Chloride, 0.0001M Zinc Chloride, 50% (v/v) Glycerol; pH 8.0
<b>Immunogen</b>	Rabbit IgG whole molecule
<b>Stabilizer</b>	10 mg/mL Bovine Serum Albumin (BSA) - Immunoglobulin and Protease free
<b>Preservative</b>	0.1% (w/v) Sodium Azide

## Additional Information

---

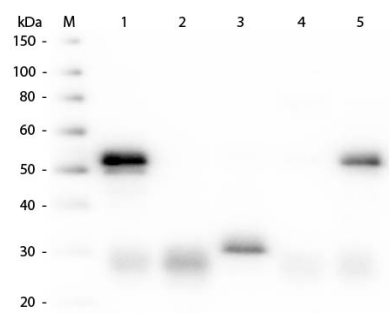
<b>Shipping Condition</b>	Wet Ice
<b>Application Note</b>	Anti-RABBIT IgG Alkaline Phosphatase Conjugated Antibody is suitable for immunoblotting (western or dot blot), ELISA, and immunohistochemistry assays requiring lot-to-lot consistency.
<b>Purity</b>	Anti-RABBIT IgG Antibody Alkaline Phosphatase Conjugated was prepared from monospecific antiserum generated in donkey by immunoaffinity chromatography using Rabbit IgG coupled to agarose beads followed by solid phase adsorption(s) to remove any unwanted reactivities. Assay by immunoelectrophoresis resulted in a single precipitin arc against anti-Alkaline Phosphatase (calf intestine), anti-Donkey Serum, Rabbit IgG and Rabbit Serum.
<b>Storage Condition</b>	Store vial at 4° C before opening. DO NOT FREEZE. This product is stable at 4° C as an undiluted liquid. Dilute only prior to immediate use. Freezing alkaline phosphatase conjugates will result in a substantial loss of enzymatic activity.
<b>Precautions Note</b>	This product is for research use only and is not intended for therapeutic or diagnostic applications.

## Background

---

Anti-Rabbit IgG generated in Donkey detects Rabbit IgG heavy and light chains. This Anti Rabbit antibody is conjugated to alkaline phosphatase and this secondary antibody is suitable for immunoblotting and immunoassays.

## Images



Western Blot of Anti-Rabbit IgG (H&L) (DONKEY) Antibody Peroxidase Conjugated (p/n 611-7302). Lane M: 3  $\mu$ l Molecular Ladder. Lane 1: Rabbit IgG whole molecule (p/n 011-0102). Lane 2: Rabbit IgG F(ab) Fragment (p/n 011-0105). Lane 3: Rabbit IgG F(c) Fragment (p/n 010-0103). Lane 4: Rabbit IgM Whole Molecule (p/n 011-0107). Lane 5: Normal Rabbit Serum (p/n B309). All samples were reduced. Load: 50 ng per lane. Block: MB-070 for 30 min at RT. Primary Antibody: Anti-Rabbit IgG (H&L) (DONKEY) Antibody Peroxidase Conjugated (p/n 611-7302) 1:5,000 for 60 min at RT. Secondary antibody: None. Predicted/Obsevered Size: 25 and 50 kDa for Rabbit IgG and Serum, 25 kDa for F(c) and F(ab), 70 and 23 kDa for IgM. Rabbit F(c) migrates slightly higher.

Please note: All products are 'FOR RESEARCH USE ONLY. NOT FOR USE IN DIAGNOSTIC OR THERAPEUTIC PROCEDURES'.