

# Anti-Rat IgG (H&L) (Alkaline Phosphatase Conjugated) Secondary Antibody

Goat Polyclonal, Alkaline Phosphatase (Calf Intestine)

Catalog # ASR2225

## Product Information

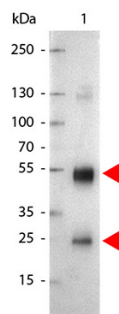
<b>Description</b>	Anti-RAT IgG (H&L) (GOAT) Antibody Alkaline Phosphatase Conjugated
<b>Host</b>	Goat
<b>Conjugate</b>	Alkaline Phosphatase (Calf Intestine)
<b>Target Species</b>	Rat
<b>Clonality</b>	Polyclonal
<b>Application</b>	WB
<b>Physical State</b>	Liquid (sterile filtered)
<b>Host Isotype</b>	IgG
<b>Target Isotype</b>	IgG (H&L)
<b>Buffer</b>	0.05 M Tris Chloride, 0.15M Sodium Chloride, 0.001M Magnesium Chloride, 0.0001M Zinc Chloride, 50% (v/v) Glycerol; pH 8.0
<b>Immunogen</b>	Rat IgG whole molecule
<b>Stabilizer</b>	10 mg/mL Bovine Serum Albumin (BSA) - Immunoglobulin and Protease free
<b>Preservative</b>	0.1% (w/v) Sodium Azide

## Additional Information

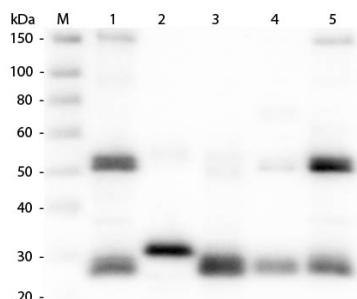
<b>Shipping Condition</b>	Wet Ice
<b>Purity</b>	This product was prepared from monospecific antiserum by immunoaffinity chromatography using Rat IgG coupled to agarose beads followed by solid phase adsorption(s) to remove any unwanted reactivities. Assay by immunoelectrophoresis resulted in a single precipitin arc against anti-Alkaline Phosphatase (calf intestine), anti-Goat Serum, Rat IgG and Rat Serum.
<b>Storage Condition</b>	Store vial at 4° C before opening. DO NOT FREEZE. This product is stable at 4° C as an undiluted liquid. Dilute only prior to immediate use. Freezing alkaline phosphatase conjugates will result in a substantial loss of enzymatic activity.
<b>Precautions Note</b>	This product is for research use only and is not intended for therapeutic or diagnostic applications.

## Images

Western Blot of Alkaline Phosphatase Conjugated Goat anti-Rat IgG antibody. Lane 1: Rat IgG. Lane 2: none. Load: 50 ng per lane. Primary antibody: none. Secondary antibody: Alkaline Phosphatase rat secondary antibody at



1:1,000 for 60 min at RT. Block: MB-070 for 30 min RT.  
Predicted/Observed size: 55 kDa, 28 kDa for Rat IgG.  
Other band(s): none.



Western Blot of Anti-Rat IgG (H&L) (GOAT) Antibody (p/n 612-1102). Lane M: 3  $\mu$ l Molecular Ladder. Lane 1: Rat IgG whole molecule (p/n 012-0102). Lane 2: Rat IgG F(c) Fragment (p/n 012-0103). Lane 3: Rat IgG F(ab) Fragment (p/n 012-0105). Lane 4: Rat IgM Whole Molecule (p/n 012-0107). Lane 5: Rat Serum (p/n D310-05). All samples were reduced. Load: 50 ng per lane. Block: MB-070 for 30 min at RT. Primary Antibody: Anti-Rat IgG (H&L) (GOAT) Antibody (p/n 612-1102) 1:1,000 for 60 min at RT. Secondary Antibody: Anti-Goat IgG (DONKEY) Peroxidase Conjugated Antibody (p/n CUST10) 1:40,000 in MB-070 for 30 min at RT. Predicted/Obsevered Size: 25 and 55 kDa for Rat IgG and Serum, 25 kDa for F(c) and F(ab), 78 and 25 kDa for IgM. Rat F(c) migrates slightly higher.

Please note: All products are 'FOR RESEARCH USE ONLY. NOT FOR USE IN DIAGNOSTIC OR THERAPEUTIC PROCEDURES'.