

Chicken IgG Alkaline Phosphatase

Catalog # ASR2260

Product Information

Description	CHICKEN IgG whole molecule Alkaline Phosphatase conjugated
Conjugate	Alkaline Phosphatase (Calf Intestine)
Physical State	Liquid (sterile filtered)
Host Isotype	IgG
Buffer	0.05 M Tris Chloride, 0.15M Sodium Chloride, 0.001M Magnesium Chloride, 0.0001M Zinc Chloride, 50% (v/v) Glycerol; pH 8.0
Species of Origin	Chicken

Additional Information

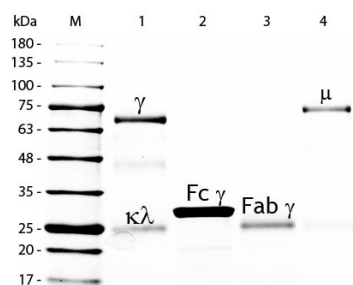
Shipping Condition	Wet Ice
Application Note	Anti-Chicken IgG antibody is suitable for immunoblotting (western or dot blot), ELISA, immunoelectron microscopy and immunohistochemistry as well as other antibody based enzymatic assays requiring lot-to-lot consistency.
Purity	This product was prepared from normal serum by delipidation, salt fractionation, ion exchange chromatography followed by conjugation and extensive dialysis against the buffer stated above. Assay by immunoelectrophoresis resulted in a single precipitin arc against anti-Chicken IgG, anti-Chicken Serum and anti-Alkaline Phosphatase (calf intestine).
Storage Condition	Store vial at 4° C before opening. DO NOT FREEZE. This product is stable at 4° C as an undiluted liquid. Dilute only prior to immediate use. Freezing alkaline phosphatase conjugates will result in a substantial loss of enzymatic activity.
Precautions Note	This product is for research use only and is not intended for therapeutic or diagnostic applications.

Background

Anti-Chicken IgG Antibody detects specifically Chicken IgG whole molecule. Anti-Chicken IgG is ideal for investigators who routinely perform ELISA, Sandwich ELISA, titration assays, western-blot, immunoprecipitation and more generally immunoassays. Anti-Chicken IgG Antibody is ideal for investigators in Cancer, Immunology, and Microbiology research.

Images

SDS-PAGE of Chicken IgG Whole Molecule Alkaline Phosphatase Conjugated (p/n ASR2260). Lane M: 5 µL Opal Prestained Marker (p/n MB-210-0500). Lane 1:



Reduced Chicken IgG Whole Molecule Alkaline Phosphatase Conjugated (p/n ASR2260). Lane 2: Reduced Chicken IgG F(c) Fragment (p/n 003-0103). Lane 3: Reduced Chicken IgG F(ab) Fragment (p/n 003-0105). Lane 4: Reduced Chicken IgM Whole Molecule (p/n 003-0107). Load: 1 µg per lane. Predicted/Observed size: IgG at 72 and 25 kDa; F(c) at 25 kDa; F(ab) at 25 kDa; IgM at 75 kDa. Observed F(c) Fragment migrates slightly higher. Other bands: Chicken IgG heavy chain alternative splicing variant at approximately 40 kDa in Lane 1.

Please note: All products are 'FOR RESEARCH USE ONLY. NOT FOR USE IN DIAGNOSTIC OR THERAPEUTIC PROCEDURES'.