

Anti-Human IgG F(c) Secondary Antibody

Mouse Monoclonal 3D8.H7.D4 IgG1 kappa , Unconjugated

Catalog # ASR2310

Product Information

Description	Anti-HUMAN IgG F(c) (MOUSE) Antibody
Host	Mouse
Conjugate	Unconjugated
Target Species	Human
Reactivity	Human
Clonality	Monoclonal 3D8.H7.D4 IgG1 kappa
Application	WB
Physical State	Liquid (sterile filtered)
Host Isotype	IgG1
Target Isotype	IgG F(c)
Buffer	0.02 M Potassium Phosphate, 0.15 M Sodium Chloride, pH 7.2
Immunogen	Anti-Human IgG F(c) monoclonal antibody was produced by repeated immunization with Human IgG F(c) fragment in mice.
Stabilizer	None
Preservative	0.01% (w/v) Sodium Azide

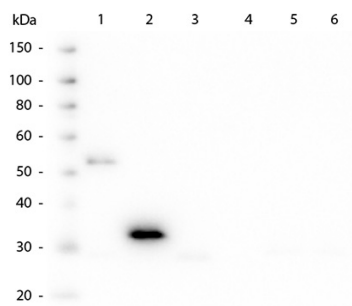
Additional Information

Shipping Condition	Dry Ice
Application Note	Human IgG F(c) antibody is suitable for immunoelectrophoresis, western-blot, competitive western-blot, ELISA and competitive ELISA assays. Specific conditions for reactivity and signal detection should be optimized by the end user.
Purity	Anti-Human IgG F(c) Antibody was prepared from concentrated roller bottle supernatant by Protein A chromatography sepharose beads. Assay by immunoelectrophoresis resulted in a single precipitin arc against anti-Mouse Serum, Human IgG, Human Serum and Human F(c). No reaction was observed against Human F(ab'ß)2.
Storage Condition	Store vial at -20° C prior to opening. Aliquot contents and freeze at -20° C or below for extended storage. Avoid cycles of freezing and thawing. Centrifuge product if not completely clear after standing at room temperature. This product is stable for several weeks at 4° C as an undiluted liquid. Dilute only prior to immediate use.
Precautions Note	This product is for research use only and is not intended for therapeutic or diagnostic applications.

Background

Human IgG F(c) fragment antibody generated in mice detects specifically human IgG. Human IgG (Fc) is a proteolytic fragment of immunoglobulin G (IgG) obtained by limited digestion with the enzyme pepsin under controlled conditions of temperature, time and pH. Receptors bind the Fc portion of Human IgG and often this fragment is removed from immunoglobulins to minimize receptor binding and lower background reactivity. This anti-human IgG secondary antibody is ideal for investigators who routinely perform titration assays, western-blot, immunoprecipitation and more generally immunoassays.

Images



Western Blot of Mouse anti-Human Fc antibody. Lane 1: Human IgG. Lane 2: Human Fc. Lane 3: Human F(ab). Lane 4: Human F(ab)2. Lane 5: Human IgM. Lane 6: Human IgM Fc5 μ. Load: 50 ng per lane. Primary antibody: Human Fc monoclonal antibody at 1:1000 for overnight at 4°C. Secondary antibody: HRP mouse secondary antibody at 1:40,000 for 30 min at RT. Block: MB-070 for 30 min at RT. Predicted/Observed size: 28 kDa, 28 kDa for Human Fc.

Please note: All products are 'FOR RESEARCH USE ONLY. NOT FOR USE IN DIAGNOSTIC OR THERAPEUTIC PROCEDURES'.