

# Anti-Chicken IgG F(ab')<sub>2</sub> Secondary Antibody

Rabbit Polyclonal, Unconjugated

Catalog # ASR2322

## Product Information

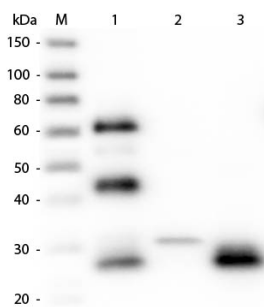
<b>Description</b>	Anti-CHICKEN IgG F(ab') <sub>2</sub> (RABBIT) Antibody
<b>Host</b>	Rabbit
<b>Conjugate</b>	Unconjugated
<b>Target Species</b>	Chicken
<b>Clonality</b>	Polyclonal
<b>Application</b>	WB
<b>Physical State</b>	Liquid (sterile filtered)
<b>Host Isotype</b>	IgG
<b>Target Isotype</b>	IgG F(ab') <sub>2</sub>
<b>Buffer</b>	0.02 M Potassium Phosphate, 0.15 M Sodium Chloride, pH 7.2
<b>Immunogen</b>	Chicken IgG F(ab') <sub>2</sub> fragment
<b>Stabilizer</b>	None
<b>Preservative</b>	0.01% (w/v) Sodium Azide

## Additional Information

<b>Shipping Condition</b>	Wet Ice
<b>Purity</b>	This product was prepared from monospecific antiserum by immunoaffinity chromatography using Chicken IgG coupled to agarose beads followed by solid phase adsorption(s) to remove any unwanted reactivities. Assay by immunoelectrophoresis resulted in a single precipitin arc against anti-Rabbit Serum, Chicken IgG, Chicken IgG F(ab') <sub>2</sub> and Chicken Serum. No reaction was observed against Chicken IgG F(c).
<b>Storage Condition</b>	Store vial at 4° C prior to opening. This product is stable for several weeks at 4° C as an undiluted liquid. Dilute only prior to immediate use. For extended storage aliquot contents and freeze at -20° C or below. Avoid cycles of freezing and thawing.
<b>Precautions Note</b>	This product is for research use only and is not intended for therapeutic or diagnostic applications.

## Images

Western Blot of Anti-Chicken IgG F(ab')<sub>2</sub> (RABBIT) Antibody (p/n ASR2322). Lane M: 3 µl Molecular Ladder. Lane 1: Chicken IgG whole molecule (p/n 003-0102). Lane 2: Chicken IgG F(c) Fragment (p/n 003-0103). Lane 3: Chicken IgG F(ab) Fragment (p/n 003-0105). All samples were reduced. Load: 50 ng per lane. Block: MB-070 for 30



min at RT. Primary Antibody: Anti-Chicken IgG F(ab')<sub>2</sub> (RABBIT) Antibody (p/n ASR2322) 1:5,000 for 60 min at RT. Secondary antibody: Anti-Rabbit IgG (GOAT) Peroxidase Conjugated Antibody (p/n 611-103-122) 1:40,000 in MB-070 for 30 min at RT. Predicted/Obsevered Size: 25 and 72 kDa for Chicken IgG, 25 kDa for F(c) and F(ab). Chicken F(c) migrates slightly higher.

Please note: All products are 'FOR RESEARCH USE ONLY. NOT FOR USE IN DIAGNOSTIC OR THERAPEUTIC PROCEDURES'.