

F(ab')₂ Anti-Human IgG F(ab')₂ (Fluorescein Conjugated) Pre-Adsorbed Secondary Antibody

Goat Polyclonal, Fluorescein (FITC)

Catalog # ASR2387

Product Information

Description	F(ab') ₂ Anti-HUMAN IgG F(ab') ₂ (GOAT) Antibody Fluorescein Conjugated Min X Bv Hs Ms & Rt Serum Proteins
Host	Goat
Conjugate	Fluorescein (FITC)
FP Value	3.7 moles Fluorescein (FITC) per mole of IgG F(ab') ₂
Target Species	Human
Clonality	Polyclonal
Application	WB
Physical State	Lyophilized
Host Isotype	IgG F(ab') ₂
Target Isotype	IgG F(ab') ₂
Buffer	0.01 M Sodium Phosphate, 0.15 M Sodium Chloride, pH 7.2
Immunogen	Human IgG F(ab') ₂ fragment
Reconstitution Volume	1.0 mL
Reconstitution Buffer	Restore with deionized water (or equivalent)
Stabilizer	10 mg/mL Bovine Serum Albumin (BSA) - Immunoglobulin and Protease free
Preservative	0.01% (w/v) Sodium Azide

Additional Information

Shipping Condition	Ambient
Application Note	Suitable for immunomicroscopy and flow cytometry or FACS analysis as well as other antibody based fluorescent assays requiring extremely low background levels, absence of F(c) mediated binding, lot-to-lot consistency, high titer and specificity.
Purity	This product was prepared from monospecific antiserum by immunoaffinity chromatography using Human IgG coupled to agarose beads followed by solid phase adsorption(s) to remove any unwanted reactivities, pepsin digestion and chromatographic separation. Assay by immunoelectrophoresis resulted in a single precipitin arc against anti-Fluorescein, anti-Goat Serum, Human IgG, Human IgG F(ab') ₂ and Human Serum. No reaction was observed against anti-Pepsin, anti-Goat IgG F(c), Human IgG F(c) or Bovine, Horse, Mouse or Rat Serum Proteins.
Storage Condition	Store vial at 4° C prior to restoration. For extended storage aliquot contents and freeze at -20° C or below. Avoid cycles of freezing and thawing. Centrifuge product if not completely clear after standing at room temperature. This product is stable for several weeks at 4° C as an undiluted liquid. Dilute only prior to immediate use.

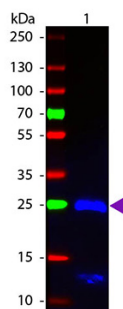
Precautions Note

This product is for research use only and is not intended for therapeutic or diagnostic applications.

Background

This product is designed for immunofluorescence microscopy, fluorescence based plate assays (FLISA) and fluorescent western blotting. This product is also suitable for multiplex analysis, including multicolor imaging, utilizing various commercial platforms.

Images



Western blot of Fluorescein conjugated Goat F(ab')₂ Anti-Human IgG F(ab')₂ (Pre-Adsorbed) secondary antibody. Lane 1: Human F(ab')₂. Lane 2: None. Load: 50 ng per lane. Primary antibody: None. Secondary antibody: Fluorescein goat secondary antibody at 1:1,000 for 60 min at RT. Blocking: MB-070 for 30 min at RT. Predicted/Observed size: 25 kDa, 25 kDa for Human IgG F(ab')₂. Other band(s): None.

Please note: All products are 'FOR RESEARCH USE ONLY. NOT FOR USE IN DIAGNOSTIC OR THERAPEUTIC PROCEDURES'.