

Chicken IgG (Agarose Conjugated)

Catalog # ASR2411

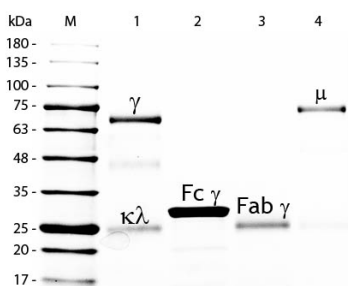
Product Information

Description	CHICKEN IgG whole molecule Agarose Conjugated
Conjugate	Unconjugated
Physical State	Suspension of agarose beads
Buffer	0.01 M Sodium Phosphate, 0.15 M Sodium Chloride, pH 7.2
Species of Origin	Chicken
Stabilizer	None
Preservative	0.01% (w/v) Sodium Azide

Additional Information

Shipping Condition	Wet Ice
Purity	This product is an purified Chicken IgG isolated from normal Chicken Serum coupled to activated agarose. Sufficient antibody capacity is provided to bind a minimum of 5 mg of anti-Chicken IgG.
Storage Condition	Store vial at 4° C prior to opening. DO NOT FREEZE.
Precautions Note	This product is for research use only and is not intended for therapeutic or diagnostic applications.

Images



SDS-PAGE of Chicken IgG Whole Molecule Agarose Conjugated(p/n ASR2411). Lane M: 5 μ L Opal Prestained Marker (p/n MB-210-0500). Lane 1: Reduced Chicken IgG Whole Molecule Agarose Conjugated (p/n ASR2411). Lane 2: Reduced Chicken IgG F(c) Fragment (p/n 003-0103). Lane 3: Reduced Chicken IgG F(ab) Fragment (p/n 003-0105). Lane 4: Reduced Chicken IgM Whole Molecule (p/n 003-0107). Load: 1 μ g per lane. Predicted/Observed size: IgG at 72 and 25 kDa; F(c) at 25 kDa; F(ab) at 25 kDa; IgM at 75 kDa. Observed F(c) Fragment migrates slightly higher. Other bands: Chicken IgG heavy chain alternative splicing variant at approximately 40 kDa in Lane 1.

Please note: All products are 'FOR RESEARCH USE ONLY. NOT FOR USE IN DIAGNOSTIC OR THERAPEUTIC PROCEDURES'.