

# Chicken IgG F(ab')<sub>2</sub> (Agarose Conjugated)

Catalog # ASR2412

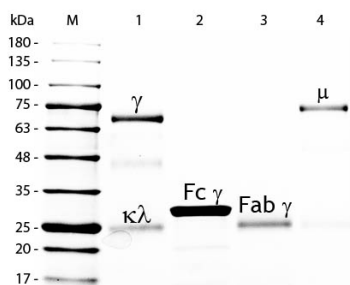
## Product Information

<b>Description</b>	CHICKEN IgG F(ab') <sub>2</sub> fragment Agarose Conjugated
<b>Conjugate</b>	Unconjugated
<b>Physical State</b>	Suspension of agarose beads
<b>Buffer</b>	0.01 M Sodium Phosphate, 0.15 M Sodium Chloride, pH 7.2
<b>Species of Origin</b>	Chicken
<b>Stabilizer</b>	None
<b>Preservative</b>	0.5% (w/v) Sodium Azide

## Additional Information

<b>Shipping Condition</b>	Wet Ice
<b>Purity</b>	This product is an purified Chicken IgG isolated from normal Chicken Serum digested by the enzyme pepsin and purified by chromatography coupled to activated agarose. Sufficient antibody capacity is provided to bind a minimum of 5 mg of anti-Chicken IgG.
<b>Storage Condition</b>	Store vial at 4° C prior to opening. DO NOT FREEZE.
<b>Precautions Note</b>	This product is for research use only and is not intended for therapeutic or diagnostic applications.

## Images



SDS-PAGE of Chicken IgG F(ab')<sub>2</sub> Fragment Agarose conjugated (p/n ASR2412). Lane M: 5 μL Opal Prestained Marker (p/n MB-210-0500). Lane 1: Reduced Chicken IgG Whole Molecule (p/n 003-0102). Lane 2: Reduced Chicken IgG F(c) Fragment (p/n 003-0103). Lane 3: Reduced Chicken IgG F(ab')<sub>2</sub> Fragment Agarose Conjugated (p/n ASR2412). Lane 4: Reduced Chicken IgM Whole Molecule (p/n 003-0107). Load: 1 μg per lane. Predicted/Observed size: IgG at 72 and 25 kDa; F(c) at 25 kDa; F(ab')<sub>2</sub> at 25 kDa; IgM at 75 kDa. Observed F(c) Fragment migrates slightly higher. Other bands: Chicken IgG heavy chain alternative splicing variant at approximately 40 kDa in Lane 1.

Please note: All products are 'FOR RESEARCH USE ONLY. NOT FOR USE IN DIAGNOSTIC OR THERAPEUTIC PROCEDURES'.