

Rabbit IgG F(ab')₂ (Agarose Conjugated)

Catalog # ASR2425

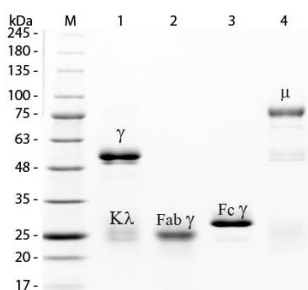
Product Information

Description	RABBIT IgG F(ab') ₂ fragment Agarose Conjugated
Conjugate	Unconjugated
Physical State	Suspension of agarose beads
Buffer	0.01 M Sodium Phosphate, 0.15 M Sodium Chloride, pH 7.2
Species of Origin	Rabbit
Stabilizer	None
Preservative	0.5% (w/v) Sodium Azide

Additional Information

Shipping Condition	Wet Ice
Purity	This product is an purified Rabbit IgG isolated from normal Rabbit Serum digested by the enzyme pepsin and purified by chromatography coupled to activated agarose. Sufficient antibody capacity is provided to bind a minimum of 5 mg of anti-Rabbit IgG.
Storage Condition	Store vial at 4° C prior to opening. DO NOT FREEZE.
Precautions Note	This product is for research use only and is not intended for therapeutic or diagnostic applications.

Images



SDS-PAGE of Rabbit IgG F(ab')₂ Fragment Agarose Conjugated (p/n ASR2425). Lane M: 3 μL Opal Prestained Marker (p/n MB-210-0500). Lane 1: Reduced Rabbit IgG Whole Molecule (p/n 011-0102). Lane 2: Reduced Rabbit IgG F(ab')₂ Fragment Agarose Conjugated (p/n ASR2425). Lane 3: Reduced Rabbit IgG F(c) Fragment (p/n 011-0103). Lane 4: Reduced Rabbit IgM Whole Molecule (p/n 011-0107). Load: 1 μg for F(ab')₂ and F(c); 1.2 μg for IgG and IgM. Predicted/Observed size: IgG at 50 and 25 kDa; F(c) at 25 kDa; F(ab')₂ at 25 kDa; IgM at 70 and 23 kDa. Observed F(c) Fragment migrates slightly higher.

Please note: All products are 'FOR RESEARCH USE ONLY. NOT FOR USE IN DIAGNOSTIC OR THERAPEUTIC PROCEDURES'.