

# Rat IgG F(ab')<sub>2</sub> (Agarose Conjugated)

Catalog # ASR2426

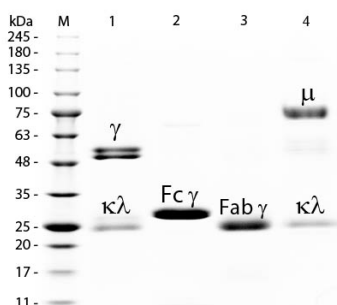
## Product Information

<b>Description</b>	RAT IgG F(ab') <sub>2</sub> fragment Agarose Conjugated
<b>Conjugate</b>	Unconjugated
<b>Physical State</b>	Suspension of agarose beads
<b>Buffer</b>	0.02 M Potassium Phosphate, 0.15 M Sodium Chloride, pH 7.2
<b>Species of Origin</b>	Rat
<b>Stabilizer</b>	None
<b>Preservative</b>	0.01% (w/v) Sodium Azide

## Additional Information

<b>Shipping Condition</b>	Wet Ice
<b>Purity</b>	This product is an purified Rat IgG isolated from normal Rat Serum digested by the enzyme pepsin and purified by chromatography coupled to activated agarose. Sufficient antibody capacity is provided to bind a minimum of 5.0 of anti-Rat IgG.
<b>Storage Condition</b>	Store vial at 4° C prior to opening. DO NOT FREEZE.
<b>Precautions Note</b>	This product is for research use only and is not intended for therapeutic or diagnostic applications.

## Images



SDS-PAGE of Rat IgG F(ab')<sub>2</sub> Fragment Agarose Conjugated (p/n ASR2426). Lane M: 3 μL Opal Prestained Marker (p/n MB-210-0500). Lane 1: Reduced Rat IgG Whole Molecule (p/n 012-0102). Lane 2: Reduced Rat IgG F(c) Fragment (p/n 012-0103). Lane 3: Reduced Rat IgG F(ab')<sub>2</sub> Fragment Agarose Conjugated (p/n ASR2426). Lane 4: Reduced Rat IgM Whole Molecule (p/n 012-0107). Load: 1 μg of IgG, F(c) and F(ab')<sub>2</sub>; 1.5 μg of IgM. Predicted/Observed size: IgG at 55 and 25 kDa; F(c) at 25 kDa; F(ab')<sub>2</sub> at 25 kDa; IgM at 78 and 25 kDa. Observed F(c) Fragment migrates slightly higher.

Please note: All products are 'FOR RESEARCH USE ONLY. NOT FOR USE IN DIAGNOSTIC OR THERAPEUTIC PROCEDURES'.