

# Anti-Human IgG IgA IgM (H&L) (Peroxidase Conjugated) Secondary Antibody

Goat Polyclonal, Peroxidase (Horseradish)

Catalog # ASR2465

## Product Information

---

<b>Description</b>	Anti-HUMAN IgG IgA IgM (H&L) (GOAT) Antibody Peroxidase Conjugated
<b>Host</b>	Goat
<b>Conjugate</b>	Peroxidase (Horseradish)
<b>Target Species</b>	Human
<b>Clonality</b>	Polyclonal
<b>Application</b>	WB
<b>Physical State</b>	Lyophilized
<b>Host Isotype</b>	IgG
<b>Target Isotype</b>	IgG IgA IgM
<b>Buffer</b>	0.02 M Potassium Phosphate, 0.15 M Sodium Chloride, pH 7.2
<b>Immunogen</b>	Anti-Human IgG IgA IgM (H&L) was produced by repeated immunization with Human IgG, IgA and IgM whole molecules in goat.
<b>Reconstitution Volume</b>	1.0 mL
<b>Reconstitution Buffer</b>	Restore with deionized water (or equivalent)
<b>Stabilizer</b>	10 mg/mL Bovine Serum Albumin (BSA) - Immunoglobulin and Protease free
<b>Preservative</b>	0.01% (w/v) Gentamicin Sulfate. Do NOT add Sodium Azide!

## Additional Information

---

<b>Shipping Condition</b>	Ambient
<b>Application Note</b>	Anti-Human IgG IgA IgM (H&L) is suitable for use in immunoelectrophoresis, western-blot, competitive western-blot, ELISA and competitive ELISA assays. Specific conditions for reactivity and signal detection should be optimized by the end user.
<b>Purity</b>	This product was prepared from polyspecific antiserum by immunoaffinity chromatography using antigens coupled to agarose beads. Assay by immunoelectrophoresis resulted in a single precipitin arc against anti-Peroxidase, anti-Goat Serum, Human IgG, Human IgA and Human IgM. This reagent is suitable for the detection of all Human immunoglobulin subclasses and chain combinations.
<b>Storage Condition</b>	Store vial at 4° C prior to restoration. For extended storage aliquot contents and freeze at -20° C or below. Avoid cycles of freezing and thawing. Centrifuge product if not completely clear after standing at room temperature. This product is stable for several weeks at 4° C as an undiluted liquid. Dilute only prior to immediate use.
<b>Precautions Note</b>	This product is for research use only and is not intended for therapeutic or diagnostic applications.

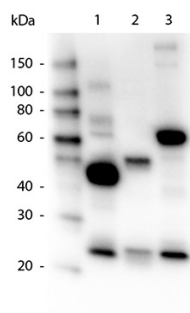
## Background

---

Anti-Human IgG IgA IgM (H&L) antibody generated in goat detects specifically human IgG IgA IgM (H&L). This secondary antibody anti-Human is ideal for investigators who routinely perform ELISA, Sandwich ELISA, titration assays, western-blot, immunoprecipitation and more generally immunoassays.

## Images

---



Western Blot of Goat anti-Human IgG, IgA, IgM Peroxidase Conjugated Antibody. Lane 1: Human IgG. Lane 2: Human IgA. Lane 3: Human IgM. Load: 50 ng per lane. Primary antibody: None. Secondary antibody: Peroxidase goat secondary antibody at 1:1,000 for 60 min at RT. Block: MB-070 for 30 min RT. Predicted/Observed size: Appropriate banding pattern for Human IgG, IgA, and IgM is shown. Other band(s): Splice variants and isoforms.

Please note: All products are 'FOR RESEARCH USE ONLY. NOT FOR USE IN DIAGNOSTIC OR THERAPEUTIC PROCEDURES'.