

Anti-Rabbit IgG F(ab')₂ (Peroxidase Conjugated) Pre-Adsorbed Secondary Antibody

Goat Polyclonal, Peroxidase (Horseradish)

Catalog # ASR2488

Product Information

| | |
|------------------------------|--|
| Description | Anti-RABBIT IgG F(ab') ₂ (GOAT) Antibody Peroxidase Conjugated (Min X Human Serum Proteins) |
| Host | Goat |
| Conjugate | Peroxidase (Horseradish) |
| Target Species | Rabbit |
| Reactivity | Rabbit |
| Clonality | Polyclonal |
| Application | WB |
| Physical State | Lyophilized |
| Host Isotype | IgG |
| Target Isotype | IgG F(ab') ₂ |
| Buffer | 0.01 M Sodium Phosphate, 0.15 M Sodium Chloride, pH 7.2 |
| Immunogen | Anti-Rabbit IgG F(ab') ₂ fragment was produced by repeated immunization with Rabbit IgG F(ab') ₂ fragment in goat. |
| Reconstitution Volume | 1.0 mL |
| Reconstitution Buffer | Restore with deionized water (or equivalent) |
| Stabilizer | 10 mg/mL Bovine Serum Albumin (BSA) - Immunoglobulin and Protease free |
| Preservative | 0.01% (w/v) Gentamicin Sulfate. Do NOT add Sodium Azide! |

Additional Information

| | |
|---------------------------|--|
| Shipping Condition | Ambient |
| Application Note | Anti-Rabbit IgG F(ab') ₂ fragment is suitable for use in immunoelectrophoresis, western-blot, competitive western-blot, ELISA and competitive ELISA assays. Specific conditions for reactivity and signal detection should be optimized by the end user. |
| Purity | Anti-RABBIT IgG F(ab') ₂ (GOAT) Antibody was prepared from monospecific antiserum by immunoaffinity chromatography using Rabbit IgG coupled to agarose. Assay by immunoelectrophoresis resulted in a single precipitin arc against anti-Peroxidase, anti-Goat Serum, Rabbit IgG, Rabbit IgG F(ab') ₂ and Rabbit Serum. No reaction was observed against Rabbit IgG F(c) or Human Serum Proteins. |
| Storage Condition | Store vial at 4° C prior to restoration. For extended storage aliquot contents and freeze at -20° C or below. Avoid cycles of freezing and thawing. Centrifuge product if not completely clear after standing at room temperature. This product is stable for several weeks at 4° C as an undiluted liquid. Dilute only prior to immediate use. |

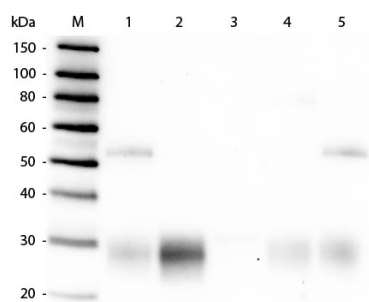
Precautions Note

This product is for research use only and is not intended for therapeutic or diagnostic applications.

Background

Anti-Rabbit IgG F(ab')₂ fragment antibody generated in goat detects specifically Rabbit IgG F(ab')₂ fragment. This secondary antibody anti-Rabbit is ideal for investigators who routinely perform ELISA, Sandwich ELISA, titration assays, western-blot, immunoprecipitation and more generally immunoassays.

Images



Western Blot of Anti-Rabbit IgG F(ab')₂ (GOAT) Antibody (p/n 611-1104). Lane M: 3 µl Molecular Ladder. Lane 1: Rabbit IgG whole molecule (p/n 011-0102). Lane 2: Rabbit IgG F(ab) Fragment (p/n 011-0105). Lane 3: Rabbit IgG F(c) Fragment (p/n 010-0103). Lane 4: Rabbit IgM Whole Molecule (p/n 011-0107). Lane 5: Normal Rabbit Serum (p/n B309). All samples were reduced. Load: 50 ng per lane. Block: MB-070 for 30 min at RT. Primary Antibody: Anti-Rabbit IgG F(ab')₂ (GOAT) Antibody (p/n 611-1104) 1:10,000 for 60 min at RT. Secondary antibody: Anti-Goat IgG (DONKEY) Peroxidase Conjugated Antibody (p/n CUST10) 1:40,000 in MB-070 for 30 min at RT. Predicted/Observed Size: 25 and 50 kDa for Rabbit IgG and Serum, 25 kDa for F(c) and F(ab), 70 and 23 kDa for IgM. Rabbit F(c) migrates slightly higher.

Please note: All products are 'FOR RESEARCH USE ONLY. NOT FOR USE IN DIAGNOSTIC OR THERAPEUTIC PROCEDURES'.