

Anti-Rat IgG F(ab')₂ (Biotin Conjugated) Secondary Antibody

Rabbit Polyclonal, Biotin
Catalog # ASR2496

Product Information

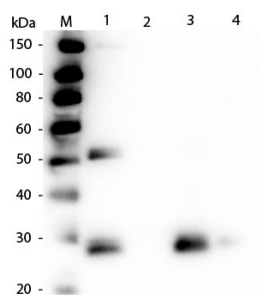
Description	Anti-RAT IgG F(ab') ₂ (RABBIT) Antibody Biotin Conjugated
Host	Rabbit
Conjugate	Biotin
Target Species	Rat
Clonality	Polyclonal
Application	WB
Physical State	Lyophilized
Host Isotype	IgG
Target Isotype	IgG F(ab') ₂
Buffer	0.02 M Potassium Phosphate, 0.15 M Sodium Chloride, pH 7.2
Immunogen	Rat IgG F(ab') ₂ fragment
Reconstitution Volume	1.0 mL
Reconstitution Buffer	Restore with deionized water (or equivalent)

Additional Information

Shipping Condition	Ambient
Purity	This product was prepared from monospecific antiserum by immunoaffinity chromatography using Rat IgG coupled to agarose beads followed by solid phase adsorption(s) to remove any unwanted reactivities. Assay by immunoelectrophoresis resulted in a single precipitin arc against anti-biotin, anti-Rabbit Serum, Rat IgG, Rat IgG F(ab') ₂ and Rat Serum. No reaction was observed against Rat IgG F(c).
Storage Condition	Store vial at 4° C prior to restoration. For extended storage aliquot contents and freeze at -20° C or below. Avoid cycles of freezing and thawing. Centrifuge product if not completely clear after standing at room temperature. This product is stable for several weeks at 4° C as an undiluted liquid. Dilute only prior to immediate use.
Precautions Note	This product is for research use only and is not intended for therapeutic or diagnostic applications.

Images

Western Blot of Anti-Rat IgG F(ab')₂ (RABBIT) Antibody
(p/n 612-4104). Lane M: 3 µl Molecular Ladder. Lane 1:
Rat IgG whole molecule (p/n 012-0102). Lane 2: Rat IgG



F(c) Fragment (p/n 012-0103). Lane 3: Rat IgG F(ab) Fragment (p/n 012-0105). Lane 4: Rat IgM Whole Molecule (p/n 012-0107). All samples were reduced. Load: 50 ng per lane. Block: MB-070 for 30 min at RT. Primary Antibody: Anti-Rat IgG F(ab')₂ (RABBIT) Antibody (p/n 612-4104) 1:1,000 for 60 min at RT. Secondary Antibody: Anti-Rabbit IgG (GOAT) Peroxidase Conjugated Antibody (p/n 611-103-122) 1:40,000 in MB-070 for 30 min at RT. Predicted/Obsevered Size: 25 and 55 kDa for Rat IgG, 25 kDa for F(c) and F(ab), 78 and 25 kDa for IgM. Rat F(c) migrates slightly higher.

Please note: All products are 'FOR RESEARCH USE ONLY. NOT FOR USE IN DIAGNOSTIC OR THERAPEUTIC PROCEDURES'.