

# F(ab')<sub>2</sub> Anti-Rabbit IgG F(ab')<sub>2</sub> (Peroxidase Conjugated) Pre-Adsorbed Secondary Antibody

Goat Polyclonal, Peroxidase (Horseradish)

Catalog # ASR2528

## Product Information

---

<b>Description</b>	F(ab') <sub>2</sub> Anti-RABBIT IgG F(ab') <sub>2</sub> (GOAT) Antibody Peroxidase Conjugated Min X Bv Hs Hu Ms Rt & Sh Serum Proteins
<b>Host</b>	Goat
<b>Conjugate</b>	Peroxidase (Horseradish)
<b>Target Species</b>	Rabbit
<b>Reactivity</b>	Rabbit
<b>Clonality</b>	Polyclonal
<b>Application</b>	WB
<b>Physical State</b>	Lyophilized
<b>Host Isotype</b>	IgG F(ab') <sub>2</sub>
<b>Target Isotype</b>	IgG F(ab') <sub>2</sub>
<b>Buffer</b>	0.02 M Potassium Phosphate, 0.15 M Sodium Chloride, pH 7.2
<b>Immunogen</b>	Anti-Rabbit IgG F(ab') <sub>2</sub> Antibody was produced in goat by repeated immunization with Rabbit IgG F(ab') <sub>2</sub> fragment.
<b>Reconstitution Volume</b>	500 $\mu$ L
<b>Reconstitution Buffer</b>	Restore with deionized water (or equivalent)
<b>Stabilizer</b>	10 mg/mL Bovine Serum Albumin (BSA) - Immunoglobulin and Protease free
<b>Preservative</b>	0.01% (w/v) Gentamicin Sulfate. Do NOT add Sodium Azide!

## Additional Information

---

<b>Shipping Condition</b>	Ambient
<b>Application Note</b>	Suitable for immunoblotting (western or dot blot), ELISA, immunoperoxidase electron microscopy and immunohistochemistry as well as other peroxidase-antibody based enzymatic assays requiring extremely low background levels, absence of F(c) mediated binding, lot-to-lot consistency, high titer and specificity.
<b>Purity</b>	Anti-Rabbit IgG F(ab') <sub>2</sub> Antibody was prepared from monospecific antiserum by immunoaffinity chromatography using Rabbit IgG coupled to agarose beads followed by solid phase adsorption(s) to remove any unwanted reactivities, pepsin digestion and chromatographic separation. Assay by immunoelectrophoresis resulted in a single precipitin arc against anti-Peroxidase, anti-Goat Serum, Rabbit IgG, Rabbit IgG F(ab') <sub>2</sub> and Rabbit Serum. No reaction was observed against anti-Pepsin, anti-Goat IgG F(c), Rabbit IgG F(c) or Bovine, Horse, Human, Mouse, Rat and Sheep Serum Proteins.
<b>Storage Condition</b>	Store vial at 4° C prior to restoration. For extended storage aliquot contents and freeze at -20° C or below. Avoid cycles of freezing and

thawing. Centrifuge product if not completely clear after standing at room temperature. This product is stable for several weeks at 4° C as an undiluted liquid. Dilute only prior to immediate use.

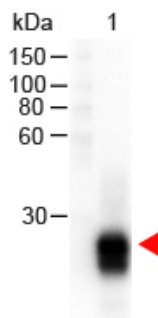
#### Precautions Note

This product is for research use only and is not intended for therapeutic or diagnostic applications.

## Background

F(ab')<sub>2</sub> Rabbit IgG F(ab')<sub>2</sub> Antibody Peroxidase Conjugated (Pre-Adsorbed) detects F(ab')<sub>2</sub> fragments. These fragments were generated by enzymatic cleavage and subsequent separation from the Fc fragment. Because of their smaller size, F(ab')<sub>2</sub> fragments offer several advantages over intact antibodies for use in certain immunochemical techniques and experimental applications. F(ab')<sub>2</sub> fragments penetrate into tissue samples and show better antigen recognition and signal generation in IHC. F(ab')<sub>2</sub> fragments lack the Fc region and therefore do not bind Fc receptors which effectively lowers background staining. F(ab')<sub>2</sub> Rabbit IgG F(ab')<sub>2</sub> Antibody Peroxidase Conjugated (Pre-Adsorbed) is ideal for investigators who routinely perform flow cytometry, immunohistochemistry or IHC and other immunoassays.

## Images



Western Blot of Goat anti-F(ab')<sub>2</sub> Rabbit IgG F(ab')<sub>2</sub> Antibody Peroxidase Conjugated (Pre-Adsorbed). Lane 1: Rabbit IgG F(ab')<sub>2</sub>. Lane 2: none. Load: 100 ng per lane. Secondary antibody: F(ab')<sub>2</sub> Rabbit IgG F(ab')<sub>2</sub> Antibody Peroxidase Conjugated (Pre-Adsorbed) at 1:1,000 for 60 min at RT. Block: MB-070 for 30 min at RT. Predicted/Observed size: 28 kDa, 28 kDa for Rabbit IgG F(ab')<sub>2</sub>.

Please note: All products are 'FOR RESEARCH USE ONLY. NOT FOR USE IN DIAGNOSTIC OR THERAPEUTIC PROCEDURES'.