

# Rabbit IgM

Catalog # ASR2573

## Product Information

---

<b>Description</b>	RABBIT IgM whole molecule
<b>Conjugate</b>	Unconjugated
<b>Physical State</b>	Liquid (sterile filtered)
<b>Host Isotype</b>	IgM
<b>Buffer</b>	0.1 M Tris Chloride, 0.5 M Sodium Chloride, pH 8.0
<b>Species of Origin</b>	Rabbit
<b>Preservative</b>	0.1% (w/v) Sodium Azide

## Additional Information

---

<b>Shipping Condition</b>	Wet Ice
<b>Application Note</b>	Rabbit IgM whole molecule can be utilized as a control or standard reagent in Western Blotting and ELISA experiments.
<b>Purity</b>	Rabbit IgM whole molecule was prepared from normal serum by a multi-step process which includes delipidation, selective precipitation and tandem molecular sieve chromatography followed by extensive dialysis against the buffer stated above. Rabbit IgM whole molecule was assayed by immunoelectrophoresis resulted in a single precipitin arc against anti-Rabbit Serum and anti-Rabbit IgM ( $\kappa$ chain specific). No reaction was observed against anti-Rabbit IgG F(c). Some light chain cross-reactivity will occur with anti-Rabbit IgG.
<b>Storage Condition</b>	Store vial at 4° C prior to opening. Rabbit IgM whole molecule is stable 4° C as an undiluted liquid. Dilute only prior to immediate use. For extended storage mix with an equal volume of glycerol, aliquot contents and freeze at -20° C or below. Avoid cycles of freezing and thawing.
<b>Precautions Note</b>	This product is for research use only and is not intended for therapeutic or diagnostic applications.

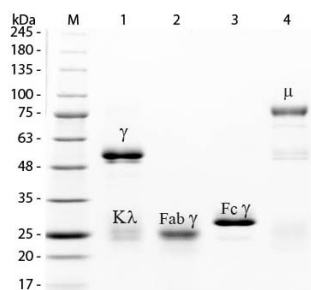
## Background

---

Immunoglobulin M is the largest antibody isotype and the first to be secreted against an initial exposure to antigen. IgM is predominantly produced in the spleen. Formed from covalently linking 5 immunoglobulins together, the approximate molecular weight of IgM is 900kDa and possesses 10 binding sites (though due to the size of most antigens, not all sites are capable of binding at once). Due to this large size, IgM is typically isolated to the serum.

## Images

---



SDS-PAGE of Rabbit IgM Whole Molecule (p/n ASR2573). Lane M: 3  $\mu$ L Opal Prestained Marker (p/n MB-210-0500). Lane 1: Reduced Rabbit IgG Whole Molecule (p/n 011-0102). Lane 2: Reduced Rabbit IgG F(ab) Fragment (p/n 011-0105). Lane 3: Reduced Rabbit IgG F(c) Fragment (p/n 011-0103). Lane 4: Reduced Rabbit IgM Whole Molecule (p/n ASR2573). Load: 1  $\mu$ g for F(ab) and F(c); 1.2  $\mu$ g for IgG and IgM. Predicted/Observed size: IgG at 50 and 25 kDa; F(c) at 25 kDa; F(ab) at 25 kDa; IgM at 70 and 23 kDa. Observed F(c) Fragment migrates slightly higher.

Please note: All products are 'FOR RESEARCH USE ONLY. NOT FOR USE IN DIAGNOSTIC OR THERAPEUTIC PROCEDURES'.