

Anti-Chicken IgG F(c) (Peroxidase Conjugated) Secondary Antibody

Rabbit Polyclonal, Peroxidase (Horseradish)

Catalog # ASR2657

Product Information

| | |
|------------------------------|--|
| Description | Anti-CHICKEN IgG F(c) (RABBIT) Antibody Peroxidase Conjugated |
| Host | Rabbit |
| Conjugate | Peroxidase (Horseradish) |
| Target Species | Chicken |
| Clonality | Polyclonal |
| Application | WB |
| Physical State | Lyophilized |
| Host Isotype | IgG |
| Target Isotype | IgG F(c) |
| Buffer | 0.02 M Potassium Phosphate, 0.15 M Sodium Chloride, pH 7.2 |
| Immunogen | Chicken IgG F(c) fragment |
| Reconstitution Volume | 1.0 mL |
| Reconstitution Buffer | Restore with deionized water (or equivalent) |
| Stabilizer | 10 mg/mL Bovine Serum Albumin (BSA) - Immunoglobulin and Protease free |
| Preservative | 0.01% (w/v) Gentamicin Sulfate. Do NOT add Sodium Azide! |

Additional Information

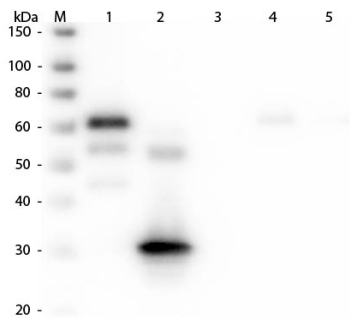
| | |
|---------------------------|---|
| Shipping Condition | Ambient |
| Application Note | This product has been assayed against 1.0 ug of Chicken IgG in a standard capture ELISA using TMB as a substrate for 30 minutes at room temperature. A working dilution of 1:5,000 to 1:20,000 is suggested for this product. This product has been assayed against 1.0 ug of Chicken IgG in a standard capture ELISA using TMB as a substrate for 30 minutes at room temperature. A working dilution of 1:5,000 to 1:20,000 is suggested for this product. |
| Purity | This product was prepared from monospecific antiserum by immunoaffinity chromatography using Chicken IgG coupled to agarose beads. Assay by immunoelectrophoresis resulted in a single precipitin arc against anti-Peroxidase, anti-Rabbit Serum, Chicken IgG, Chicken IgG F(c) and Chicken Serum. No reaction was observed against Chicken IgG F(ab') ₂ . |
| Storage Condition | Store vial at 4° C prior to restoration. For extended storage aliquot contents and freeze at -20° C or below. Avoid cycles of freezing and thawing. Centrifuge product if not completely clear after standing at room temperature. This product is stable for several weeks at 4° C as an undiluted liquid. Dilute only prior to immediate use. |
| Precautions Note | This product is for research use only and is not intended for therapeutic or |

diagnostic applications.

Background

Anti-Chicken IgG F(c) antibody generated in rabbit detects specifically chicken IgG. This secondary antibody anti-Chicken is ideal for investigators who routinely perform ELISA, Sandwich ELISA, titration assays, western-blot, immunoprecipitation and more generally immunoassays.

Images



Western Blot of Anti-Chicken IgG F(c) (RABBIT) Antibody (p/n 603-4103). Lane M: 3 μ l Molecular Ladder. Lane 1: Chicken IgG whole molecule (p/n 003-0102). Lane 2: Chicken IgG F(c) Fragment (p/n 003-0103). Lane 3: Chicken IgG F(ab) Fragment (p/n 003-0105). Lane 4: Chicken IgM Whole Molecule (p/n 003-0107). Lane 5: Chicken Serum (p/n D302-05). All samples were reduced. Load: 50 ng per lane. Block: MB-070 for 30 min at RT. Primary Antibody: Anti-Chicken IgG F(c) (RABBIT) Antibody (p/n 603-4103) 1:2,000 for 60 min at RT. Secondary antibody: Anti-Rabbit IgG (GOAT) Peroxidase Conjugated Antibody (p/n 611-103-122) 1:40,000 in MB-070 for 30 min at RT. Predicted/Obsevered Size: 25 and 72 kDa for Chicken IgG and Serum, 25 kDa for F(c) and F(ab), 75 kDa for IgM. Chicken F(c) migrates slightly higher.

Please note: All products are 'FOR RESEARCH USE ONLY. NOT FOR USE IN DIAGNOSTIC OR THERAPEUTIC PROCEDURES'.