

Anti-Mouse IgG (gamma 1, 2a, 2b and 3 chain) (Peroxidase Conjugated) Secondary Antibody

Rabbit Polyclonal, Peroxidase (Horseradish)

Catalog # ASR2741

Product Information

Description	Anti-MOUSE IgG (gamma 1, 2a, 2b and 3 chain) (RABBIT) Antibody Peroxidase Conjugated
Host	Rabbit
Conjugate	Peroxidase (Horseradish)
Target Species	Mouse
Clonality	Polyclonal
Physical State	Lyophilized
Host Isotype	IgG
Target Isotype	IgG (gamma 1, 2a, 2b and 3 chain)
Buffer	0.02 M Potassium Phosphate, 0.15 M Sodium Chloride, pH 7.2
Immunogen	Highly purified mouse IgG gamma 1, gamma 2a, gamma 2b and gamma 3 proteins
Reconstitution Volume	500 μ L
Reconstitution Buffer	Restore with deionized water (or equivalent)
Stabilizer	10 mg/mL Bovine Serum Albumin (BSA) - Immunoglobulin and Protease free
Preservative	0.01% (w/v) Gentamicin Sulfate

Additional Information

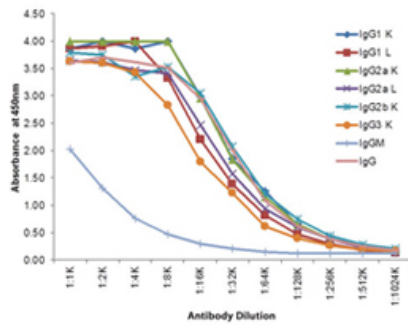
Shipping Condition	Ambient
Application Note	When choosing a secondary antibody product, consideration must be given to species and immunoglobulin specificity, conjugate type, fragment and chain specificity, level of cross-reactivity, and host-species source and fragment.
Purity	Anti-Mouse IgG subclass pan reactive Secondary Antibody was prepared from monospecific antiserum by immunoaffinity chromatography using antigens coupled to agarose beads followed by solid phase adsorption(s) to remove any unwanted reactivities. This product shows balanced reactivity to Mouse IgG1, IgG2a, IgG2b and IgG3 proteins and is suitable to screen IgG class hybridoma clones. Minimal cross reactivity is observed against other Mouse immunoglobulin classes or light chain proteins.
Storage Condition	Store vial at 4° C prior to restoration. For extended storage aliquot contents and freeze at -20° C or below. Avoid cycles of freezing and thawing. Centrifuge product if not completely clear after standing at room temperature. This product is stable for several weeks at 4° C as an undiluted liquid. Dilute only prior to immediate use.
Precautions Note	This product is for research use only and is not intended for therapeutic or

diagnostic applications.

Background

This Anti-Mouse IgG subclass pan reactive Secondary Antibody is designed for Western Blotting, ELISA and Immunohistochemistry. HRP conjugated secondary antibodies can also be used for a variety of other applications such as Assay Development.

Images



Indirect ELISA of Rabbit Anti-Mouse IgG (gamma 1, 2a, 2b, and 3) antibody. Antigen: purified mouse IgG heavy and light chains. Coating amount: 0.1 µg per well. Primary antibody: Rabbit Anti-Mouse IgG (Gamma 1, 2a, 2b, and 3) HRP conjugated Antibody. Dilution series: 2-fold. Substrate: TMB (p/n TMBE-0100).

Please note: All products are 'FOR RESEARCH USE ONLY. NOT FOR USE IN DIAGNOSTIC OR THERAPEUTIC PROCEDURES'.