

# Anti-Mouse IgG1 (Gamma 1 chain) (Rhodamine Conjugated) Secondary Antibody

Rabbit Polyclonal, Rhodamine (TRITC)

Catalog # ASR2742

## Product Information

---

<b>Description</b>	Anti-MOUSE IgG1 (Gamma 1 chain) (RABBIT) Antibody Rhodamine Conjugated
<b>Host</b>	Rabbit
<b>Conjugate</b>	Rhodamine (TRITC)
<b>FP Value</b>	2.7 moles Rhodamine (TRITC) per mole of IgG
<b>Target Species</b>	Mouse
<b>Clonality</b>	Polyclonal
<b>Application</b>	DB
<b>Physical State</b>	Lyophilized
<b>Host Isotype</b>	IgG
<b>Target Isotype</b>	IgG1
<b>Buffer</b>	0.02 M Potassium Phosphate, 0.15 M Sodium Chloride, pH 7.2
<b>Immunogen</b>	Mouse IgG1 heavy chain
<b>Reconstitution Volume</b>	1.0 mL
<b>Reconstitution Buffer</b>	Restore with deionized water (or equivalent)
<b>Stabilizer</b>	10 mg/mL Bovine Serum Albumin (BSA) - Immunoglobulin and Protease free
<b>Preservative</b>	0.01% (w/v) Sodium Azide

## Additional Information

---

<b>Shipping Condition</b>	Ambient
<b>Purity</b>	This product was prepared from monospecific antiserum by immunoaffinity chromatography using antigens coupled to agarose beads followed by solid phase adsorption(s) to remove any unwanted reactivities. Assay by immunoelectrophoresis resulted in a single precipitin arc against anti-Rabbit Serum and Mouse IgG and Mouse Serum. Specificity was confirmed by ELISA at less than 1% cross reactivity against other mouse heavy or light chain isotypes.
<b>Storage Condition</b>	Store vial at 4° C prior to restoration. For extended storage aliquot contents and freeze at -20° C or below. Avoid cycles of freezing and thawing. Centrifuge product if not completely clear after standing at room temperature. This product is stable for several weeks at 4° C as an undiluted liquid. Dilute only prior to immediate use.
<b>Precautions Note</b>	This product is for research use only and is not intended for therapeutic or diagnostic applications.

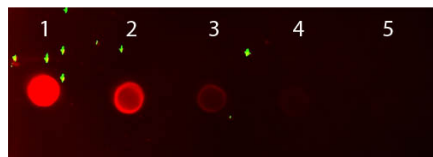
## Background

---

This product is designed for immunofluorescence microscopy, fluorescence based plate assays (FLISA) and fluorescent western blotting. This product is also suitable for multiplex analysis, including multicolor imaging, utilizing various commercial platforms.

## Images

---



Dot Blot of Rhodamine Conjugated Rabbit-anti-Mouse IgG1. Antigen: Mouse IgG1. Load: Lane 1 - 50ng Lane 2 - 16.67ng Lane 3 - 5.56ng Lane 4 - 1.85ng Lane 5 - 0.62ng. Primary antibody: none. Secondary antibody: Rhodamine Conjugated Rabbit-a-Mouse IgG1 secondary antibody at 1:1,000 for 60 min at RT. Block: MB-070 for 60 min at RT.

Please note: All products are 'FOR RESEARCH USE ONLY. NOT FOR USE IN DIAGNOSTIC OR THERAPEUTIC PROCEDURES'.