

Anti-Mouse IgG1 (Fluorescein Conjugated) Secondary Antibody

Rabbit Polyclonal, Fluorescein (FITC)

Catalog # ASR2749

Product Information

Description	Anti-MOUSE IgG1 (Gamma 1 chain) (RABBIT) Antibody Fluorescein Conjugated
Host	Rabbit
Conjugate	Fluorescein (FITC)
FP Value	3.9 moles Fluorescein (FITC) per mole of IgG
Target Species	Mouse
Clonality	Polyclonal
Application	WB
Physical State	Lyophilized
Host Isotype	IgG
Target Isotype	IgG1
Buffer	0.02 M Potassium Phosphate, 0.15 M Sodium Chloride, pH 7.2
Immunogen	Mouse IgG1 heavy chain
Reconstitution Volume	1.0 mL
Reconstitution Buffer	Restore with deionized water (or equivalent)
Stabilizer	10 mg/mL Bovine Serum Albumin (BSA) - Immunoglobulin and Protease free
Preservative	0.01% (w/v) Sodium Azide

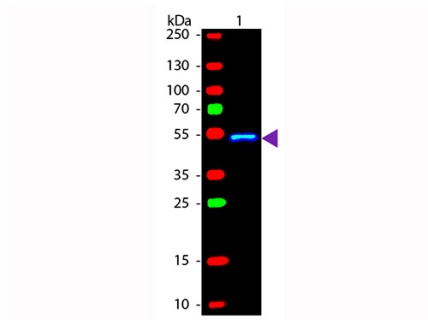
Additional Information

Shipping Condition	Ambient
Purity	This product was prepared from monospecific antiserum by immunoaffinity chromatography using antigens coupled to agarose beads followed by solid phase adsorption(s) to remove any unwanted reactivities. Assay by immunoelectrophoresis resulted in a single precipitin arc against anti-Fluorescein, anti-Rabbit Serum, Mouse IgG and Mouse Serum. Specificity was confirmed by ELISA at less than 1% cross reactivity against other mouse heavy or light chain isotypes.
Storage Condition	Store secondary antibody at 4° C prior to restoration. For extended storage aliquot contents and freeze at -20° C or below. Avoid cycles of freezing and thawing. Centrifuge product if not completely clear after standing at room temperature. This product is stable for several weeks at 4° C as an undiluted liquid. Dilute only prior to immediate use.
Precautions Note	This product is for research use only and is not intended for therapeutic or diagnostic applications.

Background

Mouse IgG1 secondary antibody conjugated to FITC is available in a variety of formats. Anti Mouse IgG1 secondary antibody conjugate is suitable for immunofluorescence microscopy, fluorescence based plate assays (FLISA) and fluorescent western blotting. This IgG1 antibody is also suitable for multiplex analysis, including multicolor imaging, utilizing various commercial platforms.

Images



Western blot of Fluorescein conjugated Rabbit Anti-Mouse IgG1 (Gamma 1 chain) secondary antibody. Lane 1: Mouse IgG1. Lane 2: None. Load: 50 ng per lane. Primary antibody: None. Secondary antibody: Fluorescein rabbit secondary antibody at 1:1,000 for 60 min at RT. Blocking: MB-070 for 30 min at RT. Predicted/Observed size: 55 kDa, 55 kDa for Mouse IgG1 (Gamma 1 chain). Other band(s): None.

Please note: All products are 'FOR RESEARCH USE ONLY. NOT FOR USE IN DIAGNOSTIC OR THERAPEUTIC PROCEDURES'.