

Anti-Rabbit IgG F(c) (Alkaline Phosphatase Conjugated) Pre-Adsorbed Secondary Antibody

Goat Polyclonal, Alkaline Phosphatase (Calf Intestine)

Catalog # ASR2767

Product Information

Description	Anti-RABBIT IgG F(c) (GOAT) Antibody Alkaline Phosphatase Conjugated (Min X Human Serum Proteins)
Host	Goat
Conjugate	Alkaline Phosphatase (Calf Intestine)
Target Species	Rabbit
Clonality	Polyclonal
Application	WB, DB
Physical State	Liquid (sterile filtered)
Host Isotype	IgG
Target Isotype	IgG F(c)
Buffer	0.05 M Tris Chloride, 0.15M Sodium Chloride, 0.001M Magnesium Chloride, 0.0001M Zinc Chloride, 50% (v/v) Glycerol; pH 8.0
Immunogen	Rabbit IgG F(c) fragment
Stabilizer	10 mg/mL Bovine Serum Albumin (BSA) - Immunoglobulin and Protease free
Preservative	0.05% (w/v) Sodium Azide

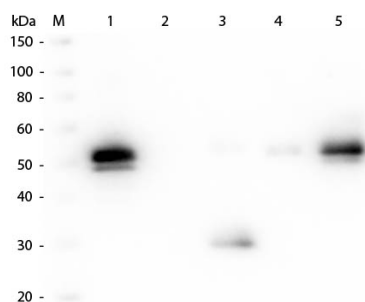
Additional Information

Shipping Condition	Wet Ice
Application Note	This product has been assayed against 1.0 μ g of Rabbit IgG in a standard capture ELISA using pNPP p-nitrophenyl phosphate code # NPP-10 as a substrate for 30 minutes at room temperature. A working dilution of 1:3,000 to 1:15,000 is suggested for this product. This product has been assayed against 1.0 μ g of Rabbit IgG in a standard capture ELISA using pNPP p-nitrophenyl phosphate code # NPP-10 as a substrate for 30 minutes at room temperature. A working dilution of 1:3,000 to 1:15,000 is suggested for this product.
Purity	This product was prepared from monospecific antiserum by immunoaffinity chromatography using Rabbit IgG coupled to agarose beads followed by solid phase adsorption(s) to remove any unwanted reactivities. Assay by immunoelectrophoresis resulted in a single precipitin arc against anti-Alkaline Phosphatase (calf intestine), anti-Goat Serum, Rabbit IgG, Rabbit IgG F(c) and Rabbit Serum. No reaction was observed against Rabbit IgG F(ab') ₂ or Human Serum Proteins.
Storage Condition	Store vial at 4° C before opening. DO NOT FREEZE. This product is stable at 4° C as an undiluted liquid. Dilute only prior to immediate use. Freezing alkaline phosphatase conjugates will result in a substantial loss of enzymatic activity.

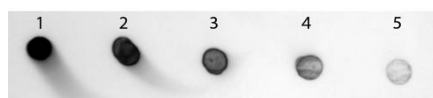
Precautions Note

This product is for research use only and is not intended for therapeutic or diagnostic applications.

Images



Western Blot of Anti-Rabbit IgG F(c) (GOAT) Antibody (p/n 611-1103). Lane M: 3 μ l Molecular Ladder. Lane 1: Rabbit IgG whole molecule (p/n 011-0102). Lane 2: Rabbit IgG F(ab) Fragment (p/n 011-0105). Lane 3: Rabbit IgG F(c) Fragment (p/n 010-0103). Lane 4: Rabbit IgM Whole Molecule (p/n 011-0107). Lane 5: Normal Rabbit Serum (p/n B309). All samples were reduced. Load: 50 ng of IgG, F(ab), IgM and Serum, 100 ng of F(c). Block: MB-070 for 30 min at RT. Primary Antibody: Anti-Rabbit IgG F(c) (GOAT) Antibody (p/n 611-1103) 1:2,000 for 60 min at RT. Secondary antibody: Anti-Goat IgG (DONKEY) Peroxidase Conjugated Antibody (p/n CUST10) 1:40,000 in MB-070 for 30 min at RT. Predicted/Obsevered Size: 25 and 50 kDa for Rabbit IgG and Serum, 25 kDa for F(c) and F(ab), 70 and 23 kDa for IgM. Rabbit F(c) migrates slightly higher.



Dot Blot of Goat anti-Rabbit IgG Fc Antibody (Min X Human) Alkaline Phosphatase Conjugated. Antigen: Rabbit IgG Fc. Load: Lane 1 - 200 ng Lane 2 - 66.67 ng Lane 3 - 22.22 ng Lane 4 - 7.41 ng Lane 5 - 2.47 ng. Primary antibody: none. Secondary antibody: Goat anti-Rabbit IgG Fc Antibody (Min X Human) Alkaline Phosphatase Conjugated at 1:1,000 for 60 min at RT. Block: MB-070 for 60 min at RT. Visualized using NBT-100 Alkaline Phosphatase Substrate for 30 seconds at RT.

Please note: All products are 'FOR RESEARCH USE ONLY. NOT FOR USE IN DIAGNOSTIC OR THERAPEUTIC PROCEDURES'.