

Anti-Rabbit IgG F(ab')₂ (Alkaline Phosphatase Conjugated) Pre-Adsorbed Secondary Antibody

Goat Polyclonal, Alkaline Phosphatase (Calf Intestine)

Catalog # ASR2768

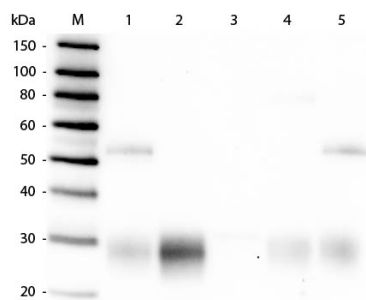
Product Information

| | |
|-----------------------|---|
| Description | Anti-RABBIT IgG F(ab') ₂ (GOAT) Antibody Alkaline Phosphatase Conjugated (Min X Human Serum Proteins) |
| Host | Goat |
| Conjugate | Alkaline Phosphatase (Calf Intestine) |
| Target Species | Rabbit |
| Clonality | Polyclonal |
| Application | WB |
| Physical State | Liquid (sterile filtered) |
| Host Isotype | IgG |
| Target Isotype | IgG F(ab') ₂ |
| Buffer | 0.05 M Tris Chloride, 0.15M Sodium Chloride, 0.001M Magnesium Chloride, 0.0001M Zinc Chloride, 50% (v/v) Glycerol; pH 8.0 |
| Immunogen | Rabbit IgG F(ab') ₂ fragment |
| Stabilizer | 10 mg/mL Bovine Serum Albumin (BSA) - Immunoglobulin and Protease free |
| Preservative | 0.01% (w/v) Sodium Azide |

Additional Information

| | |
|---------------------------|--|
| Shipping Condition | Wet Ice |
| Application Note | This product has been assayed against 1.0 ug of Rabbit IgG in a standard capture ELISA using pNPP p-nitrophenyl phosphate code # NPP-10 as a substrate for 30 minutes at room temperature. A working dilution of 1:500 to 1:2,100 of the reconstitution concentration is suggested for this product. |
| Purity | This product was prepared from monospecific antiserum by immunoaffinity chromatography using Rabbit IgG coupled to agarose beads followed by solid phase adsorption(s) to remove any unwanted reactivities. Assay by immunoelectrophoresis resulted in a single precipitin arc against anti-Alkaline Phosphatase (calf intestine), anti-Goat Serum, Rabbit IgG, Rabbit IgG F(ab') ₂ and Rabbit Serum. No reaction was observed against Rabbit IgG F(c) or Human Serum Proteins. |
| Storage Condition | Store vial at 4° C before opening. DO NOT FREEZE. This product is stable at 4° C as an undiluted liquid. Dilute only prior to immediate use. Freezing alkaline phosphatase conjugates will result in a substantial loss of enzymatic activity. |
| Precautions Note | This product is for research use only and is not intended for therapeutic or diagnostic applications. |

Images



Western Blot of Anti-Rabbit IgG F(ab')₂ (GOAT) Antibody (p/n 611-1104). Lane M: 3 µl Molecular Ladder. Lane 1: Rabbit IgG whole molecule (p/n 011-0102). Lane 2: Rabbit IgG F(ab) Fragment (p/n 011-0105). Lane 3: Rabbit IgG F(c) Fragment (p/n 010-0103). Lane 4: Rabbit IgM Whole Molecule (p/n 011-0107). Lane 5: Normal Rabbit Serum (p/n B309). All samples were reduced. Load: 50 ng per lane. Block: MB-070 for 30 min at RT. Primary Antibody: Anti-Rabbit IgG F(ab')₂ (GOAT) Antibody (p/n 611-1104) 1:10,000 for 60 min at RT. Secondary antibody: Anti-Goat IgG (DONKEY) Peroxidase Conjugated Antibody (p/n CUST10) 1:40,000 in MB-070 for 30 min at RT. Predicted/Observed Size: 25 and 50 kDa for Rabbit IgG and Serum, 25 kDa for F(c) and F(ab), 70 and 23 kDa for IgM. Rabbit F(c) migrates slightly higher.

Please note: All products are 'FOR RESEARCH USE ONLY. NOT FOR USE IN DIAGNOSTIC OR THERAPEUTIC PROCEDURES'.