

Anti-Rabbit IgG (H&L) Pre-Adsorbed Secondary Antibody

Mouse Polyclonal, Fluorescein (FITC)

Catalog # ASR2774

Product Information

Description	Anti-RABBIT IgG (H&L) (MOUSE) Antibody Fluorescein Conjugated (Min X Hu, Gt, Ms Serum Proteins)
Host	Mouse
Conjugate	Fluorescein (FITC)
FP Value	3.2 moles Fluorescein (FITC) per mole of IgG
Target Species	Rabbit
Clonality	Polyclonal
Application	WB
Physical State	Lyophilized
Host Isotype	IgG
Target Isotype	IgG (H&L)
Buffer	0.02 M Potassium Phosphate, 0.15 M Sodium Chloride, pH 7.2
Immunogen	Rabbit IgG whole molecule
Reconstitution Volume	1.0 mL
Reconstitution Buffer	Restore with deionized water (or equivalent)
Stabilizer	10 mg/mL Bovine Serum Albumin (BSA) - Immunoglobulin and Protease free
Preservative	0.01% (w/v) Sodium Azide

Additional Information

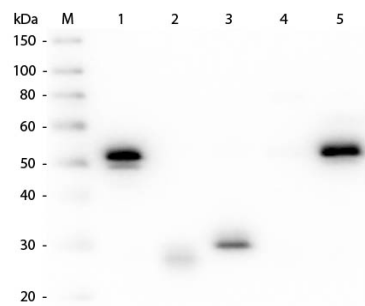
Shipping Condition	Ambient
Purity	This product was prepared from monospecific antiserum by immunoaffinity chromatography using Rabbit IgG coupled to agarose beads followed by solid phase adsorption(s) to remove any unwanted reactivities. Assay by immunoelectrophoresis resulted in a single precipitin arc against anti-Fluorescein, anti-Mouse Serum, Rabbit IgG and Rabbit Serum. No reaction was observed against Human, Goat and Mouse Serum Proteins.
Storage Condition	Store vial at 4° C prior to restoration. For extended storage aliquot contents and freeze at -20° C or below. Avoid cycles of freezing and thawing. Centrifuge product if not completely clear after standing at room temperature. This product is stable for several weeks at 4° C as an undiluted liquid. Dilute only prior to immediate use.
Precautions Note	This product is for research use only and is not intended for therapeutic or diagnostic applications.

Background

This product is designed for immunofluorescence microscopy, fluorescence based plate assays (FLISA) and fluorescent western blotting. This product is also suitable for multiplex analysis, including multicolor

imaging, utilizing various commercial platforms.

Images



Western Blot of Anti-Rabbit IgG (H&L) (MOUSE) Antibody (Min X Hu, Gt, Ms Serum Proteins) (p/n 611-301-122). Lane M: 3 μ l Molecular Ladder. Lane 1: Rabbit IgG whole molecule (p/n 011-0102). Lane 2: Rabbit IgG F(ab) Fragment (p/n 011-0105). Lane 3: Rabbit IgG F(c) Fragment (p/n 010-0103). Lane 4: Rabbit IgM Whole Molecule (p/n 011-0107). Lane 5: Normal Rabbit Serum (p/n B309). All samples were reduced. Load: 50 ng per lane. Block: MB-070 for 30 min at RT. Primary Antibody: Anti-Rabbit IgG (H&L) (MOUSE) Antibody (Min X Hu, Gt, Ms Serum Proteins) (p/n 611-301-122) 1:1,000 for 60 min at RT. Secondary antibody: Anti-Mouse IgG (RABBIT) Peroxidase Conjugated Antibody (p/n 610-403-C46) 1:40,000 in MB-070 for 30 min at RT. Predicted/Obsevered Size: 25 and 50 kDa for Rabbit IgG and Serum, 25 kDa for F(c) and F(ab), 70 and 23 kDa for IgM. Rabbit F(c) migrates slightly higher.

Please note: All products are 'FOR RESEARCH USE ONLY. NOT FOR USE IN DIAGNOSTIC OR THERAPEUTIC PROCEDURES'.