

# Anti-Rabbit IgG (H&L) (Biotin Conjugated) Pre-Adsorbed Secondary Antibody

Donkey Polyclonal, Biotin  
Catalog # ASR2787

## Product Information

---

<b>Description</b>	Anti-RABBIT IgG (H&L) (DONKEY) Antibody Biotin Conjugated (Min X Bv Ch Gt GP Ham Hs Hu Ms Rt & Sh Serum Proteins)
<b>Host</b>	Donkey
<b>Conjugate</b>	Biotin
<b>FP Value</b>	10-20 moles Biotin per mole of IgG
<b>Target Species</b>	Rabbit
<b>Clonality</b>	Polyclonal
<b>Application</b>	WB
<b>Physical State</b>	Lyophilized
<b>Host Isotype</b>	IgG
<b>Target Isotype</b>	IgG (H&L)
<b>Buffer</b>	0.02 M Potassium Phosphate, 0.15 M Sodium Chloride, pH 7.2
<b>Immunogen</b>	Rabbit IgG whole molecule
<b>Reconstitution Volume</b>	1.0 mL
<b>Reconstitution Buffer</b>	Restore with deionized water (or equivalent)
<b>Stabilizer</b>	10 mg/mL Bovine Serum Albumin (BSA) - Immunoglobulin and Protease free
<b>Preservative</b>	0.01% (w/v) Sodium Azide

## Additional Information

---

**Shipping Condition** Ambient

**Application Note** This product has been assayed against 1.0 ug of Rabbit IgG in a standard capture ELISA using Peroxidase Conjugated Streptavidin #S000-03 and ABTS (2,2'-azino-bis-[3-ethylbenthiazoline-6-sulfonic acid]) code # ABTS-100 as a substrate for 30 minutes at room temperature. A working dilution of 1:50,000 to 1:200,000 is suggested for this product. This product has been assayed against 1.0 ug of Rabbit IgG in a standard capture ELISA using Peroxidase Conjugated Streptavidin #S000-03 and ABTS (2,2'-azino-bis-[3-ethylbenthiazoline-6-sulfonic acid]) code # ABTS-100 as a substrate for 30 minutes at room temperature. A working dilution of 1:50,000 to 1:200,000 is suggested for this product. This product has been assayed against 1.0 ug of Rabbit IgG in a standard capture ELISA using Peroxidase Conjugated Streptavidin #S000-03 and ABTS (2,2'-azino-bis-[3-ethylbenthiazoline-6-sulfonic acid]) code # ABTS-100 as a substrate for 30 minutes at room temperature. A working dilution of 1:50,000 to 1:200,000 is suggested for this product. This product has been assayed against 1.0 ug of Rabbit IgG in a standard capture ELISA using Peroxidase Conjugated Streptavidin #S000-03 and ABTS (2,2'-azino-bis-[3-ethylbenthiazoline-6-sulfonic acid]) code # ABTS-100 as a substrate for 30 minutes at room temperature. A working dilution of

1:50,000 to 1:200,000 is suggested for this product.

### Purity

This product was prepared from monospecific antiserum by immunoaffinity chromatography using Rabbit IgG coupled to agarose beads followed by solid phase adsorption(s) to remove any unwanted reactivities. Assay by immunoelectrophoresis resulted in a single precipitin arc against anti-biotin, anti-Donkey Serum, Rabbit IgG and Rabbit Serum. No reaction was observed against Bovine, Chicken, Goat, Guinea Pig, Horse, Human, Mouse, Rat and Sheep Serum Proteins.

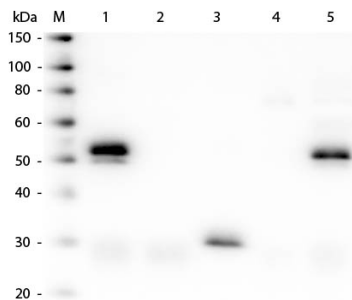
### Storage Condition

Store vial at 4° C prior to restoration. For extended storage aliquot contents and freeze at -20° C or below. Avoid cycles of freezing and thawing. Centrifuge product if not completely clear after standing at room temperature. This product is stable for several weeks at 4° C as an undiluted liquid. Dilute only prior to immediate use.

### Precautions Note

This product is for research use only and is not intended for therapeutic or diagnostic applications.

## Images



Western Blot of Anti-Rabbit IgG (H&L) (DONKEY) Antibody (Min X Bv Ch Gt GP Ham Hs Hu Ms Rt & Sh Serum Proteins) (p/n 611-701-127). Lane M: 3 µl Molecular Ladder. Lane 1: Rabbit IgG whole molecule (p/n 011-0102). Lane 2: Rabbit IgG F(ab) Fragment (p/n 011-0105). Lane 3: Rabbit IgG F(c) Fragment (p/n 010-0103). Lane 4: Rabbit IgM Whole Molecule (p/n 011-0107). Lane 5: Normal Rabbit Serum (p/n B309). All samples were reduced. Load: 50 ng of IgG, F(ab), F(c) and Serum, 25 ng of IgM. Block: MB-070 for 30 min at RT. Primary Antibody: Anti-Rabbit IgG (H&L) (DONKEY) Antibody (Min X Bv Ch Gt GP Ham Hs Hu Ms Rt & Sh Serum Proteins) (p/n 611-701-127) 1:7,500 for 60 min at RT. Secondary antibody: Anti-Donkey IgG (GOAT) Peroxidase Conjugated Antibody (p/n 616-1302) 1:40,000 in MB-070 for 30 min at RT. Predicted/Obsevered Size: 25 and 50 kDa for Rabbit IgG and Serum, 25 kDa for F(c) and F(ab), 70 and 23 kDa for IgM. Rabbit F(c) migrates slightly higher.

Please note: All products are 'FOR RESEARCH USE ONLY. NOT FOR USE IN DIAGNOSTIC OR THERAPEUTIC PROCEDURES'.