

F(ab')₂ Anti-Rat IgG (H&L) Pre-Adsorbed Secondary Antibody

Goat Polyclonal, Unconjugated
Catalog # ASR2818

Product Information

Description	F(ab') ₂ Anti-RAT IgG (H&L) (GOAT) Antibody (Min X MOUSE Serum Proteins)
Host	Goat
Conjugate	Unconjugated
Target Species	Rat
Reactivity	Rat
Clonality	Polyclonal
Application	WB
Physical State	Liquid (sterile filtered)
Host Isotype	IgG F(ab') ₂
Target Isotype	IgG (H&L)
Buffer	0.02 M Potassium Phosphate, 0.15 M Sodium Chloride, pH 7.2
Immunogen	Anti-Rat IgG was produced by repeated immunization with Rat IgG whole molecule in goat.
Stabilizer	None
Preservative	0.01% (w/v) Sodium Azide

Additional Information

Shipping Condition	Wet Ice
Application Note	Suitable for immunomicroscopy and flow cytometry or FACS analysis as well as other antibody based fluorescent assays requiring extremely low background levels, absence of F(c) mediated binding, lot-to-lot consistency, high titer and specificity. The maximum amount of reagent required to stain 1 x 10 ⁶ cells in flow cytometry is approximately 1.0 µg of antibody. Lesser amounts of reagent may be sufficient for staining. Optimal titers for other applications should be determined by the researcher. As a general guideline dilutions of 1:100 to 1:250 should be suitable for most applications.
Purity	This product was prepared from monospecific antiserum by immunoaffinity chromatography using Rat IgG coupled to agarose beads followed by solid phase adsorption(s) to remove any unwanted reactivities, pepsin digestion and chromatographic separation. Assay by immunoelectrophoresis resulted in a single precipitin arc against anti-Goat Serum, Rat IgG and Rat Serum. No reaction was observed against anti-Pepsin, anti-Goat IgG F(c) or Mouse Serum Proteins.
Storage Condition	Store vial at 4° C prior to opening. This product is stable for several weeks at 4° C as an undiluted liquid. Dilute only prior to immediate use. For extended storage aliquot contents and freeze at -20° C or below. Avoid

cycles of freezing and thawing.

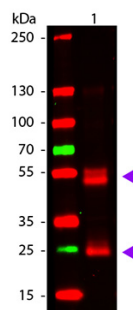
Precautions Note

This product is for research use only and is not intended for therapeutic or diagnostic applications.

Background

F(ab')₂ Rat IgG (H&L) Antibody (Pre-Adsorbed) was generated by enzymatic cleavage and subsequent separation from the Fc fragment. Because of their smaller size, F(ab)₂ fragments offer several advantages over intact antibodies for use in certain immunochemical techniques and experimental applications. F(ab)₂ fragments penetrate into tissue samples and show better antigen recognition and signal generation in IHC. F(ab)₂ fragments lack the Fc region and therefore do not bind Fc receptors which effectively lowers background staining. F(ab')₂ Rat IgG (H&L) Antibody (Pre-Adsorbed) is ideal for investigators who routinely perform flow cytometry, immunohistochemistry or IHC and other immunoassays.

Images



Western Blot of Goat anti-Rat IgG Antibody. Lane 1: Rat IgG. Lane 2: None. Load: 50 ng per lane. Primary antibody: Rat antibody at 1,000 overnight at 4°C. Secondary antibody: DyLight™ 649 goat secondary antibody at 1:20,000 for 30 min at RT. Block: MB-070 for 30 min at RT. Predicted/Observed size: 28 & 55 kDa, 28 & 55 kDa for Rat IgG. Other band(s): None.

Please note: All products are 'FOR RESEARCH USE ONLY. NOT FOR USE IN DIAGNOSTIC OR THERAPEUTIC PROCEDURES'.