

Mouse IgG2b isotype control Phycoerythrin

Monoclonal M2B IgG2b , R-Phycoerythrin (RPE)

Catalog # ASR3078

Product Information

Description	MOUSE IgG2b isotype control Phycoerythrin conjugated
Conjugate	R-Phycoerythrin (RPE)
Clonality	Monoclonal M2B IgG2b
Application	DB
Physical State	Lyophilized
Host Isotype	IgG2b
Buffer	0.02 M Potassium Phosphate, 0.15 M Sodium Chloride, pH 7.2
Species of Origin	Mouse
Reconstitution Volume	1.0 mL
Reconstitution Buffer	Restore with deionized water (or equivalent)
Stabilizer	10 mg/mL Bovine Serum Albumin (BSA) - Immunoglobulin and Protease free
Preservative	0.01% (w/v) Sodium Azide

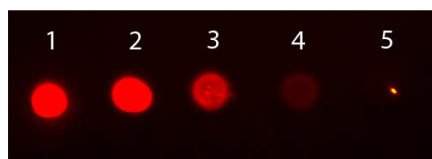
Additional Information

Shipping Condition	Ambient
Application Note	Mouse IgG2b isotype control can be utilized as a control or standard reagent in Flow cytometry, Western Blotting, and ELISA experiments where determination of sample isotype is important.
Purity	This product was prepared from ascitic fluid by affinity chromatography. Assay by immunoelectrophoresis resulted in a single precipitin arc against anti-Phycoerythrin and Anti-Mouse Serum. Specificity was confirmed by ELISA at less than 1% cross reactivity against other anti-Mouse heavy or light chain isotypes antibodies.
Storage Condition	Store vial at 4° C prior to opening. Dilute only prior to immediate use. Do not freeze after reconstitution. Store reagent in the dark. This product is stable at 4° C as an undiluted liquid. Use subdued lighting during handling and incubation of cells prior to analysis.
Precautions Note	This product is for research use only and is not intended for therapeutic or diagnostic applications.

Background

Isotype controls are important for Flow Cytometry and have no specificity for target cells within a particular experiment. Their purpose is to confirm the specificity of primary antibody binding that it is not a result of non-specific Fc receptor binding to cells or other cellular protein interactions. Isotype controls need to be matched to the specific primary Abs (species and isotype, including heavy and light chains) being used.

Images



Dot Blot of Mouse IgG2b Isotype Control Phycoerythrin Conjugated. Antigen: none. Load: Lane 1 - 50 ng Lane 2 - 16.67 ng Lane 3 - 5.56 ng Lane 4 - 1.85 ng Lane 5 - 0.62 ng. Mouse IgG2b Isotype Control Phycoerythrin Conjugated blotted directly to membrane at above dilutions. Block: MB-070 for 60 min at RT.

Please note: All products are 'FOR RESEARCH USE ONLY. NOT FOR USE IN DIAGNOSTIC OR THERAPEUTIC PROCEDURES'.