

# Swine IgG F(c)

Catalog # ASR3081

## Product Information

---

<b>Description</b>	SWINE IgG F(c) fragment
<b>Conjugate</b>	Unconjugated
<b>Physical State</b>	Liquid (sterile filtered)
<b>Host Isotype</b>	IgG F(c)
<b>Buffer</b>	0.02 M Potassium Phosphate, 0.15 M Sodium Chloride, pH 7.2
<b>Species of Origin</b>	Swine
<b>Stabilizer</b>	None
<b>Preservative</b>	0.01% (w/v) Sodium Azide

## Additional Information

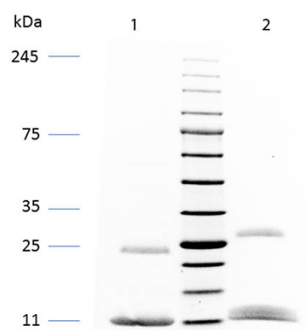
---

<b>Shipping Condition</b>	Wet Ice
<b>Purity</b>	<p>This product was prepared from normal serum by a multi-step process which includes delipidation, salt fractionation, ion exchange chromatography and papain digestion followed by chromatographic separation and extensive dialysis against the buffer stated above. Assay by immunoelectrophoresis resulted in a single precipitin arc against anti-Swine Serum, anti-Swine IgG and anti-Swine IgG F(c). No reaction was observed against anti-Swine IgG F(ab')<sub>2</sub> or anti-Papain. By SDS-PAGE this material may appear as 50, 25 and 12 kDa bands under non-reducing conditions and predominately 25 and 12 kDa bands under reducing conditions. This is normal for papain digested Swine IgG. These bands consist of determinants derived entirely from F(c) portions of Swine IgG.</p>
<b>Storage Condition</b>	<p>Store vial at 4° C prior to opening. This product is stable 4° C as an undiluted liquid. Dilute only prior to immediate use. For extended storage mix with an equal volume of glycerol, aliquot contents and freeze at -20° C or below. Avoid cycles of freezing and thawing.</p>
<b>Precautions Note</b>	<p>This product is for research use only and is not intended for therapeutic or diagnostic applications.</p>

## Images

---

SDS-PAGE of Swine IgG F(c). Lane 1: Non-reduced Swine IgG F(c). Lane 2: 5 µL OPAL Pre-stained Marker MB-210-0500. Lane 3: Reduced Swine IgG F(c). Load: 1 µg per lane. Predicted/Observed size: Non-reduced at 50, 25, 12kDa, Reduced at 25, 12 kDa/Non-reduced at 25, 12kDa, Reduced at 25, 12kDa.



Please note: All products are 'FOR RESEARCH USE ONLY. NOT FOR USE IN DIAGNOSTIC OR THERAPEUTIC PROCEDURES'.