

Anti-Goat IgG (Phycoerythrin Conjugated) Secondary Antibody

Donkey Polyclonal, R-Phycoerythrin (RPE)

Catalog # ASR3085

Product Information

Description	Anti-GOAT IgG (DONKEY) Antibody Phycoerythrin conjugate
Host	Donkey
Conjugate	R-Phycoerythrin (RPE)
Target Species	Goat
Clonality	Polyclonal
Application	WB, DB
Physical State	Lyophilized
Host Isotype	IgG
Target Isotype	IgG (H&L)
Buffer	0.02 M Potassium Phosphate, 0.15 M Sodium Chloride, pH 7.2
Immunogen	Goat IgG whole molecule
Species of Origin	donkey
Reconstitution Volume	1.0 mL
Stabilizer	10 mg/mL Bovine Serum Albumin (BSA) - Immunoglobulin and Protease free
Preservative	0.01% (w/v) Sodium Azide

Additional Information

Shipping Condition	Wet Ice
Application Note	Anti-Goat IgG (H&L) antibody is suitable for immunomicroscopy and flow cytometry or FACS analysis as well as other antibody based fluorescent assays requiring extremely low background levels, absence of F(c) mediated binding, lot-to-lot consistency, high titer and specificity. The maximum amount of reagent required to stain 1 x 10 ⁶ cells in flow cytometry is approximately 1.0 µg of antibody conjugate. Lesser amounts of reagent may be sufficient for staining. Optimal titers for other applications should be determined by the researcher. As a general guideline dilutions of 1:100 to 1:250 should be suitable for most applications. Specific conditions for reactivity should be optimized by the end user.
Purity	Anti-Goat IgG was prepared from monospecific antiserum by immunoaffinity chromatography using Goat IgG coupled to agarose beads followed by solid phase adsorption(s) to remove any unwanted reactivities. Assay by immunoelectrophoresis resulted in a single precipitin arc against anti-Phycoerythrin, anti-Donkey Serum, Goat IgG and Goat Serum. No reaction was observed against Chicken, Guinea Pig, Hamster, Horse, Mouse, Human, Rabbit and Rat Serum Proteins.
Storage Condition	Store vial at 4° C prior to opening. Dilute only prior to immediate use. Do not freeze after reconstitution. Store reagent in the dark. This product is stable at

4° C as an undiluted liquid. Use subdued lighting during handling and incubation of cells prior to analysis.

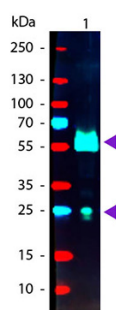
Precautions Note

This product is for research use only and is not intended for therapeutic or diagnostic applications.

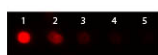
Background

Goat IgG antibody recognizes IgG heavy and light chains. Anti-Goat IgG antibody was prepared from monospecific antiserum by immunoaffinity chromatography using Goat IgG coupled to agarose beads followed by solid phase adsorption(s) to remove any unwanted reactivities. Assay by immunoelectrophoresis resulted in a single precipitin arc against anti-Phycoerythrin, anti-Donkey Serum, Goat IgG and Goat Serum. No reaction was observed against Chicken, Guinea Pig, Hamster, Horse, Mouse, Human, Rabbit and Rat Serum Proteins. Anti-Goat IgG (H&L) antibody is ideal for investigators involved in serum component protein research.

Images



Western blot of Phycoerythrin conjugated Donkey Anti-Goat IgG Secondary antibody. Lane 1: Goat IgG. Lane 2: None. Load: 50 ng per lane. Primary antibody: None. Secondary antibody: Phycoerythrin donkey secondary antibody at 1:1,000 for 60 min at RT. Blocking: MB-070 for 30 min at RT. Predicted/Observed size: 25 & 55 kDa, 25 & 55 kDa for Goat IgG. Other band(s): None.



Dot Blot of Donkey anti-Goat IgG Antibody Phycoerythrin Conjugated. Antigen: Goat IgG. Load: Lane 1 - 100 ng Lane 2 - 33.3 ng Lane 3 - 11.1 ng Lane 4 - 3.70 ng Lane 5 - 1.23 ng. Primary antibody: none. Secondary antibody: Donkey anti-Goat IgG Antibody Phycoerythrin Conjugated at 1:1,000 for 60 min at RT. Block: MB-070 for 1 HR at RT.

Please note: All products are 'FOR RESEARCH USE ONLY. NOT FOR USE IN DIAGNOSTIC OR THERAPEUTIC PROCEDURES'.