

Anti-Mouse IgG (H&L) (Phycoerythrin Conjugated) Pre-Adsorbed Secondary Antibody

Goat Polyclonal, R-Phycoerythrin (RPE)

Catalog # ASR3094

Product Information

Description	Anti-MOUSE IgG [H&L] (GOAT) Antibody Phycoerythrin conjugated Min X Bv Ch Gt GP Hs Ham Hu Rb Rt &Sh Serum Proteins
Host	Goat
Conjugate	R-Phycoerythrin (RPE)
Target Species	Mouse
Reactivity	Mouse
Clonality	Polyclonal
Application	DB
Physical State	Lyophilized
Host Isotype	IgG
Target Isotype	IgG (H&L)
Buffer	0.02 M Potassium Phosphate, 0.15 M Sodium Chloride, pH 7.2
Immunogen	Anti-Mouse IgG was produced by repeated immunization with Mouse IgG whole molecule in goat.
Reconstitution Volume	1.0 mL
Reconstitution Buffer	Restore with deionized water (or equivalent)
Stabilizer	10 mg/mL Bovine Serum Albumin (BSA) - Immunoglobulin and Protease free
Preservative	0.01% (w/v) Sodium Azide

Additional Information

Shipping Condition	Ambient
Application Note	Suitable for immunomicroscopy and flow cytometry or FACS analysis as well as other antibody based fluorescent assays requiring extremely low background levels, absence of F(c) mediated binding, lot-to-lot consistency, high titer and specificity. The maximum amount of reagent required to stain 1 x 10 ⁶ cells in flow cytometry is approximately 1.0 µg of antibody conjugate. Lesser amounts of reagent may be sufficient for staining. Optimal titers for other applications should be determined by the researcher. As a general guideline dilutions of 1:100 to 1:250 should be suitable for most applications.
Purity	This product was prepared from monospecific antiserum by immunoaffinity chromatography using Mouse IgG coupled to agarose beads followed by solid phase adsorption(s) to remove any unwanted reactivities, conjugation to phycoerythrin and subsequent purification, and extensive dialysis against the buffer stated above. Assay by immunoelectrophoresis resulted in a single precipitin arc against anti-Phycoerythrin, anti-Goat Serum, Mouse IgG and Mouse Serum. No reaction was observed against Bovine, Chicken, Goat, Guinea Pig, Hamster, Horse, Human, Rabbit, Rat and Sheep Serum Proteins.

Storage Condition

Store vial at 4° C prior to opening. Dilute only prior to immediate use. Do not freeze after reconstitution. Store reagent in the dark. This product is stable at 4° C as an undiluted liquid. Use subdued lighting during handling and incubation of cells prior to analysis.

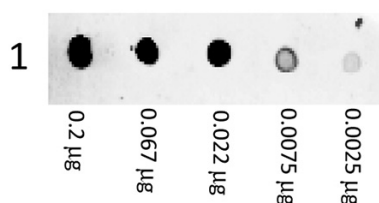
Precautions Note

This product is for research use only and is not intended for therapeutic or diagnostic applications.

Background

Anti-Mouse IgG (H&L) Phycoerythrin conjugated antibody generated in goat detects specifically mouse IgG (H&L). This secondary conjugated antibody anti-mouse is ideal for investigators who routinely perform immunomicroscopy and flow cytometry or FACS analysis as well as other antibody-based fluorescent assays requiring extremely low background levels.

Images



Dot Blot of Goat anti-Mouse IgG Antibody Phycoerythrin Conjugated. Antigen: Mouse IgG. Load: 3-fold serial dilution starting at 200 ng. Primary antibody: None. Secondary antibody: Phycoerythrin goat secondary antibody at 1:1,000 for 60 min at RT. Block: 5% BLOTTO 1 Hour at RT.

Please note: All products are 'FOR RESEARCH USE ONLY. NOT FOR USE IN DIAGNOSTIC OR THERAPEUTIC PROCEDURES'.