

# Anti-Rabbit IgG (H&L) (Phycoerythrin Conjugated) Pre-Adsorbed Secondary Antibody

Goat Polyclonal, R-Phycoerythrin (RPE)

Catalog # ASR3103

## Product Information

---

<b>Description</b>	Anti-RABBIT IgG [H&L] (GOAT) Antibody Phycoerythrin conjugated (Min X Bv Ch Gt GP Ham Hs Hu Ms Rt & Sh Serum Proteins)
<b>Host</b>	Goat
<b>Conjugate</b>	R-Phycoerythrin (RPE)
<b>Target Species</b>	Rabbit
<b>Reactivity</b>	Rabbit
<b>Clonality</b>	Polyclonal
<b>Application</b>	WB
<b>Physical State</b>	Lyophilized
<b>Host Isotype</b>	IgG
<b>Target Isotype</b>	IgG (H&L)
<b>Buffer</b>	0.02 M Potassium Phosphate, 0.15 M Sodium Chloride, pH 7.2
<b>Immunogen</b>	Anti-Rabbit IgG was produced by repeated immunization with rabbit IgG whole molecule in goat.
<b>Reconstitution Volume</b>	1.0 mL
<b>Reconstitution Buffer</b>	Restore with deionized water (or equivalent)
<b>Stabilizer</b>	10 mg/mL Bovine Serum Albumin (BSA) - Immunoglobulin and Protease free
<b>Preservative</b>	0.01% (w/v) Sodium Azide

## Additional Information

---

<b>Shipping Condition</b>	Ambient
<b>Application Note</b>	Anti-Rabbit IgG (H&L) Phycoerythrin Antibody is suitable for immunomicroscopy and flow cytometry or FACS analysis as well as other antibody based fluorescent assays requiring extremely low background levels, absence of F(c) mediated binding, lot-to-lot consistency, high titer and specificity. The maximum amount of reagent required to stain $1 \times 10^6$ cells in flow cytometry is approximately 1.0 $\mu$ g of antibody conjugate. Lesser amounts of reagent may be sufficient for staining. Optimal titers for other applications should be determined by the researcher. As a general guideline dilutions of 1:100 to 1:250 should be suitable for most applications.
<b>Purity</b>	Rabbit IgG (H&L) Antibody Phycoerythrin conjugated (Pre-Adsorbed) was prepared from monospecific antiserum by immunoaffinity chromatography using Rabbit IgG coupled to agarose beads followed by solid phase adsorption(s) to remove any unwanted reactivities, conjugation to phycoerythrin and subsequent purification, and extensive dialysis against the buffer stated above. Assay by immunoelectrophoresis resulted in a single precipitin arc against anti-Phycoerythrin, anti-Goat Serum, Rabbit IgG and Rabbit Serum. No reaction was observed against Bovine, Chicken, Goat,

Guinea Pig, Hamster, Horse, Human, Mouse, Rat and Sheep Serum Proteins.

## Storage Condition

Store vial at 4° C prior to opening. Dilute only prior to immediate use. Do not freeze after reconstitution. Store reagent in the dark. This product is stable at 4° C as an undiluted liquid. Use subdued lighting during handling and incubation of cells prior to analysis.

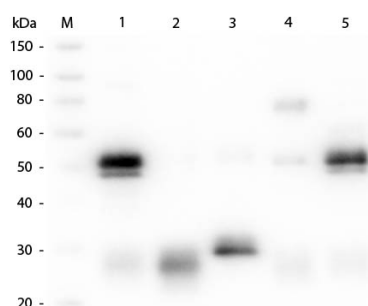
## Precautions Note

This product is for research use only and is not intended for therapeutic or diagnostic applications.

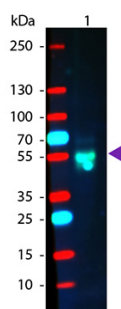
## Background

Anti-Rabbit IgG (H&L) phycoerythrin conjugated antibody generated in goat detects specifically rabbit IgG. This secondary phycoerythrin conjugated antibody anti-Rabbit is ideal for investigators who routinely perform titration assays, microscopy and FACS analysis.

## Images



Western Blot of Anti-Rabbit IgG (H&L) (GOAT) Antibody (Min X Bv, Ch, Gt, GP, Ham, Hs, Hu, Ms, Rt & Sh Serum Proteins) (p/n 611-101-122). Lane M: 3  $\mu$ l Molecular Ladder. Lane 1: Rabbit IgG whole molecule (p/n 011-0102). Lane 2: Rabbit IgG F(ab) Fragment (p/n 011-0105). Lane 3: Rabbit IgG F(c) Fragment (p/n 010-0103). Lane 4: Rabbit IgM Whole Molecule (p/n 011-0107). Lane 5: Normal Rabbit Serum (p/n B309). All samples were reduced. Load: 50 ng per lane. Block: MB-070 for 30 min at RT. Primary Antibody: Anti-Rabbit IgG (H&L) (GOAT) Antibody (Min X Bv, Ch, Gt, GP, Ham, Hs, Hu, Ms, Rt & Sh Serum Proteins) (p/n 611-101-122) 1:1,000 for 60 min at RT. Secondary antibody: Anti-Goat IgG (DONKEY) Peroxidase Conjugated Antibody (p/n CUST10) 1:40,000 in MB-070 for 30 min at RT. Predicted/Observed Size: 25 and 50 kDa for Rabbit IgG and Serum, 25 kDa for F(c) and F(ab), 70 and 23 kDa for IgM. Rabbit F(c) migrates slightly higher.



Western Blot of Goat anti-Rabbit IgG Pre-Absorbed Phycoerythrin Conjugated Antibody. Lane 1: Rabbit IgG. Lane 2: None. Load: 50 ng per lane. Primary antibody: None. Secondary antibody: Phycoerythrin goat secondary antibody at 1:1,000 for 60 min at RT. Block: MB-070 for 30 min at RT. Predicted/Observed size: 28 & 55 kDa, 55 kDa for Rabbit IgG. Other band(s): None.

Please note: All products are 'FOR RESEARCH USE ONLY. NOT FOR USE IN DIAGNOSTIC OR THERAPEUTIC PROCEDURES'.