

Anti-Monkey IgM (mu chain) Secondary Antibody

Goat Polyclonal, Alkaline Phosphatase (Calf Intestine)

Catalog # ASR3114

Product Information

Description	Anti-MONKEY IgM (mu chain) (GOAT) Antibody Alkaline Phosphatase Conjugated
Host	Goat
Conjugate	Alkaline Phosphatase (Calf Intestine)
Target Species	Monkey
Clonality	Polyclonal
Application	WB
Physical State	Liquid (sterile filtered)
Host Isotype	IgG
Target Isotype	IgM μ chain
Buffer	0.05 M Tris Chloride, 0.15M Sodium Chloride, 0.001M Magnesium Chloride, 0.0001M Zinc Chloride, 50% (v/v) Glycerol; pH 8.0
Immunogen	Monkey IgM mu heavy chain
Stabilizer	10 mg/mL Bovine Serum Albumin (BSA) - Immunoglobulin and Protease free
Preservative	0.01% (w/v) Sodium Azide

Additional Information

Shipping Condition	Wet Ice
Application Note	Anti-Monkey IgM (mu chain) Antibody is suitable for immunoblotting (western or dot blot), ELISA, immunoperoxidase electron microscopy and immunohistochemistry as well as other peroxidase-antibody based enzymatic assays requiring lot-to-lot consistency. Specific conditions for reactivity should be optimized by the end user.
Purity	Anti-Monkey IgM (mu chain) Antibody was prepared from monospecific antiserum by immunoaffinity chromatography using Monkey IgM coupled to agarose beads followed by solid phase adsorption(s) to remove any unwanted reactivities. Assay by immunoelectrophoresis resulted in a single precipitin arc against anti-Alkaline Phosphatase (calf intestine), anti-Goat Serum, Monkey IgM and Monkey Serum. Specificity was confirmed by ELISA at less than 1% cross reactivity against other mouse or human heavy or light chain isotypes.
Storage Condition	Store vial at 4° C before opening. DO NOT FREEZE. This product is stable at 4° C as an undiluted liquid. Dilute only prior to immediate use. Freezing alkaline phosphatase conjugates will result in a substantial loss of enzymatic activity.
Precautions Note	This product is for research use only and is not intended for therapeutic or diagnostic applications.

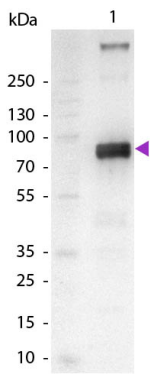
Background

Anti-Monkey IgM (mu chain) Antibody generated in goat detects specifically mouse IgM whole molecule. Anti-Monkey IgM (mu chain) Antibody is ideal for investigators who routinely perform ELISA, Sandwich ELISA, titration assays, western-blot, immunoprecipitation and more generally immunoassays. Anti-Monkey IgM (mu chain) Antibody is ideal for investigators in Immunology, Cancer, and Microbiology research.

Images

This table displays additional reactivity among various species of serum and immunoglobulin. A (+) indicates antibody reactivity to the corresponding target.

Product	Gt-a-Monkey IgG	Gt-a-Monkey IgA	Gt-a-Monkey IgM
Rhesus Serum	+	+	+
Baboon Serum	+	+	+
Cynomolgus Serum	+	+	+
Rhesus IgG	+		
Human IgA		+	
Human IgM			+



Western Blot of Alkaline Phosphatase Conjugated Goat Anti-Monkey IgM (mu chain) Secondary Antibody. Lane 1: Monkey IgM. Lane 2: None. Load: 100 ng per lane. Primary antibody: None. Secondary antibody: Alkaline Phosphatase goat secondary antibody at 1:1,000 for 60 min at RT. Blocking: MB-070 for 30 min at RT. Predicted/Observed size: 72 kDa, 72 kDa for Monkey IgM. Other band(s): Monkey IgM splice variants and isoforms.

Please note: All products are 'FOR RESEARCH USE ONLY. NOT FOR USE IN DIAGNOSTIC OR THERAPEUTIC PROCEDURES'.