

F(ab')₂ Anti-Mouse IgG F(ab')₂ (Phycoerythrin Conjugated) Pre-Adsorbed Secondary Antibody

Goat Polyclonal, R-Phycoerythrin (RPE)

Catalog # ASR3193

Product Information

Description	F(ab') ₂ Anti-MOUSE IgG F(ab') ₂ (GOAT) Antibody Phycoerythrin conjugated Min X Bv Hs & Hu Serum Proteins
Host	Goat
Conjugate	R-Phycoerythrin (RPE)
Target Species	Mouse
Reactivity	Mouse
Clonality	Polyclonal
Application	WB
Physical State	Lyophilized
Host Isotype	IgG F(ab') ₂
Target Isotype	IgG F(ab') ₂
Buffer	0.02 M Potassium Phosphate, 0.15 M Sodium Chloride, pH 7.2
Immunogen	Mouse IgG F(ab') ₂ fragment
Reconstitution Volume	1.0 mL
Reconstitution Buffer	Restore with deionized water (or equivalent)
Stabilizer	10 mg/mL Bovine Serum Albumin (BSA) - Immunoglobulin and Protease free
Preservative	0.01% (w/v) Sodium Azide

Additional Information

Shipping Condition	Wet Ice
Application Note	Suitable for immunomicroscopy and flow cytometry or FACS analysis as well as other antibody based fluorescent assays requiring extremely low background levels, absence of F(c) mediated binding, lot-to-lot consistency, high titer and specificity. The maximum amount of reagent required to stain 1 x 10 ⁶ cells in flow cytometry is approximately 1.0 µg of antibody conjugate. Lesser amounts of reagent may be sufficient for staining. Optimal titers for other applications should be determined by the researcher. As a general guideline dilutions of 1:100 to 1:250 should be suitable for most applications.
Purity	F(ab') ₂ fragment PE conjugated Anti-Mouse IgG F(ab') ₂ was prepared from monospecific antiserum by immunoaffinity chromatography using Mouse IgG coupled to agarose beads followed by solid phase adsorption(s) to remove any unwanted reactivities, pepsin digestion and chromatographic separation. Assay by immunoelectrophoresis resulted in a single precipitin arc against anti-Phycoerythrin, anti-Goat Serum, Mouse IgG, Mouse IgG F(ab') ₂ and Mouse Serum. No reaction was observed against anti-Pepsin, anti-Goat IgG F(c), Mouse IgG F(c) or Bovine, Horse or Human Serum Proteins.

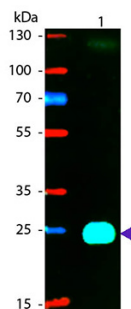
Storage Condition

Store vial at 4° C prior to opening. Dilute only prior to immediate use. Do not freeze after reconstitution. Store reagent in the dark. This product is stable at 4° C as an undiluted liquid. Use subdued lighting during handling and incubation of cells prior to analysis.

Precautions Note

This product is for research use only and is not intended for therapeutic or diagnostic applications.

Images



Western blot of Phycoerythrin conjugated Goat F(ab')₂ Anti-Mouse IgG F(ab')₂ (Pre-Adsorbed) secondary antibody. Lane 1: Mouse F(ab')₂. Lane 2: None. Load: 50 ng per lane. Primary antibody: None. Secondary antibody: Phycoerythrin goat secondary antibody at 1:1,000 for 60 min at RT. Blocking: MB-070 for 30 min at RT. Predicted/Observed size: 25 kDa, 25 kDa for Mouse IgG F(ab')₂. Other band(s): None.

Please note: All products are 'FOR RESEARCH USE ONLY. NOT FOR USE IN DIAGNOSTIC OR THERAPEUTIC PROCEDURES'.