

# Human IgG F(c) Texas Red™

Catalog # ASR3210

## Product Information

---

<b>Description</b>	HUMAN IgG F(c) fragment Texas Red™ conjugated
<b>Conjugate</b>	Texas Red®
<b>FP Value</b>	2.6 moles Texas Red® per mole of Human IgG F(c)
<b>Application</b>	DB
<b>Physical State</b>	Lyophilized
<b>Host Isotype</b>	IgG F(c)
<b>Buffer</b>	0.02 M Potassium Phosphate, 0.15 M Sodium Chloride, pH 7.2
<b>Species of Origin</b>	Human
<b>Reconstitution Volume</b>	1.0 mL
<b>Reconstitution Buffer</b>	Restore with deionized water (or equivalent)
<b>Stabilizer</b>	10 mg/mL Bovine Serum Albumin (BSA) - Immunoglobulin and Protease free
<b>Preservative</b>	0.01% (w/v) Sodium Azide

## Additional Information

---

<b>Shipping Condition</b>	Ambient
<b>Purity</b>	Human IgG F(c) Texas Red™ was prepared from normal serum by delipidation, salt fractionation, ion exchange chromatography followed by papain digestion and extensive dialysis against the buffer stated above. Assay by immunoelectrophoresis resulted in a single precipitin arc against anti-Human IgG, anti-Human IgG F(c) and anti-Human Serum. No reaction was observed against anti-Human IgG F(ab') <sub>2</sub> or anti-Papain.
<b>Storage Condition</b>	Store vial at 4° C prior to restoration. For extended storage aliquot contents and freeze at -20° C or below. Avoid cycles of freezing and thawing. Centrifuge product if not completely clear after standing at room temperature. This product is stable for several weeks at 4° C as an undiluted liquid. Dilute only prior to immediate use.
<b>Precautions Note</b>	This product is for research use only and is not intended for therapeutic or diagnostic applications.

## Background

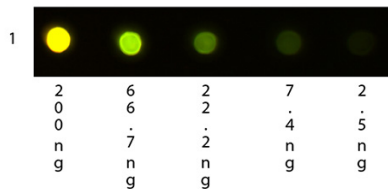
---

Human IgG F(c) Texas Red™ conjugated antibodies are designed for immunofluorescence microscopy, fluorescence based plate assays (FLISA) and fluorescent western blotting. This product is also suitable for multiplex analysis, including multicolor imaging, utilizing various commercial platforms.

## Images

---

Dot Blot of Human IgG F(c) Texas Red™ Conjugated.



Antigen: Texas Red™ Conjugated Human IgG F(c). Load: 3-fold serial dilution starting at 200 ng. Primary antibody: None. Secondary antibody: None. Block: MB-070 for 1 H at RT.

Please note: All products are 'FOR RESEARCH USE ONLY. NOT FOR USE IN DIAGNOSTIC OR THERAPEUTIC PROCEDURES'.